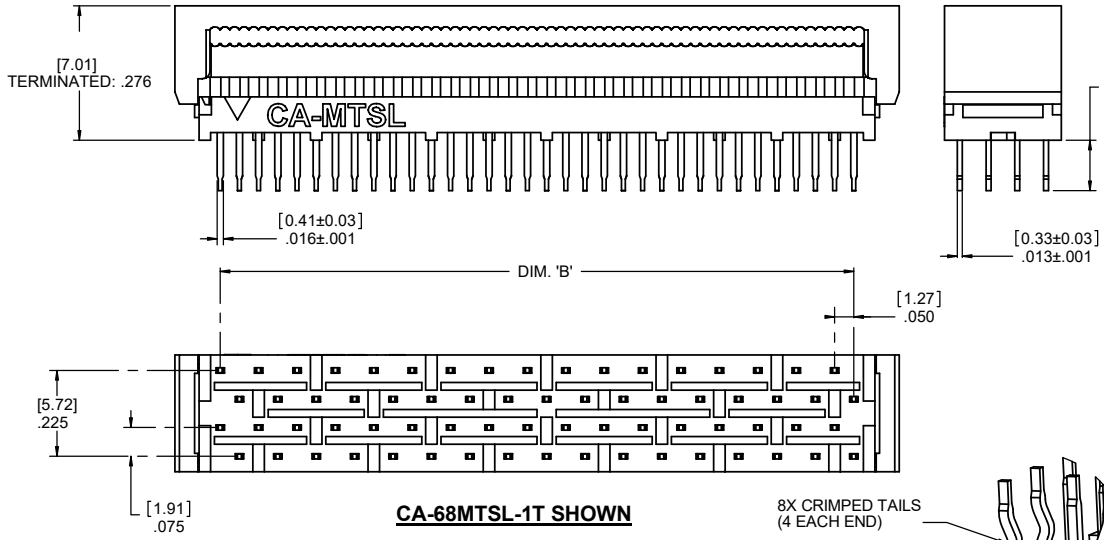
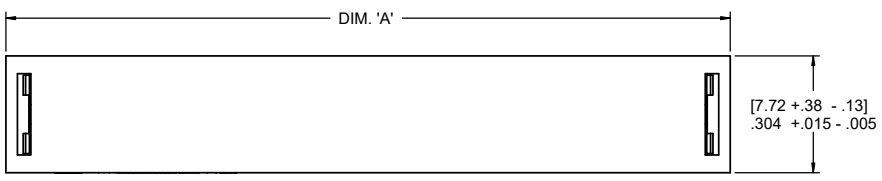


PART NO. CA-XXMTSL-XT-X

LTR	DESCRIPTION	DATE	APPROVED
R	SEE DO 5755	CP 04-21-05	L.F.
S	SEE DO 7548	CP 12-03-19	T.L.
T	SEE DO 7625	CP 08-19-21	T.L.

REVISIONS			
LTR	DESCRIPTION	DATE	APPROVED
A	INITIAL RELEASE SEE DO 3190	DL 08-19-98	A.J.
B	SEE DO 3312	DL 01-08-99	A.J.
C	SEE DO 3526	AJ 04-02-99	A.J.
D	SEE DO 3632	DL 06-23-99	A.J.
E	SEE DO 3649	DL 07-13-99	A.J.
F	SEE DO 3697	DL 07-28-99	A.J.
G	SEE DO 3747	AJ 09-22-99	A.J.
H	SEE DO 3808	AJ 12-09-99	A.J.
J	SEE DO 4035	JL 06-08-00	A.J.
K	SEE DO 4097	JL 07-24-00	A.J.
L	SEE DO 4266	CW 12-08-00	A.J.
M	SEE DO 4629	CP 09-27-01	A.J.
N	SEE DO 5355	CP 12-17-03	A.J.
P	SEE DO 5578	CP 08-25-04	A.J.



CA - XX MTSL - X T - X

NO OF POSITIONS _____

MICRO TRANSITION PLUG SLIM LINE _____

TAIL LENGTH (DIM. 'C'):

S = .10
1 = .13

PLATING: _____

T = .000150 TIN OVER .000075 NICKEL

OPTIONAL RETENTION FEATURE: _____

BLANK = NO RETENTION FEATURE
2 = WITH RETENTION FEATURE

4. FOR SPECIFICATIONS AND PERFORMANCES OF "MTSL" CONNECTOR SERIES SEE DWG NO. 100250

3. SPECIFICATIONS:
- ENVIRONMENTAL
 - TEMPERATURE RANGE : -55°C TO +105°C
 - MECHANICAL
 - INSULATOR MATERIAL : GLASS FILLED THERMOPLASTIC, BLACK, UL94V-0
 - PIN MATERIAL : PHOSPHOR BRONZE
 - PIN PLATING : .000150 TIN OVER .000075 NICKEL
 - ELECTRICAL
 - CURRENT RATING : 0.5 AMP
 - DIELECTRIC WITHSTANDING VOLTAGE : 500 VDC FOR 1 MIN.
 - INSULATOR RESISTANCE : >1000 MEGOHMS @ 500 VDC
 - CONTACT RESISTANCE : <.15 MILLIOHMS MEASURED THROUGH INSULATION DISPLACEMENT PORTION OF THE MTSL CONNECTOR

2. INTERPRET DIMENSIONS AND TOLERANCES PER ASME Y14.5 - 1994

1. MEETS THE REQUIREMENTS OF THE EUROPEAN PARLIAMENT AND THE RESTRICTION OF THE USE OF CERTAIN HAZARDOUS SUBSTANCES IN ELECTRICAL AND ELECTRONIC EQUIPMENT. (RoHS)

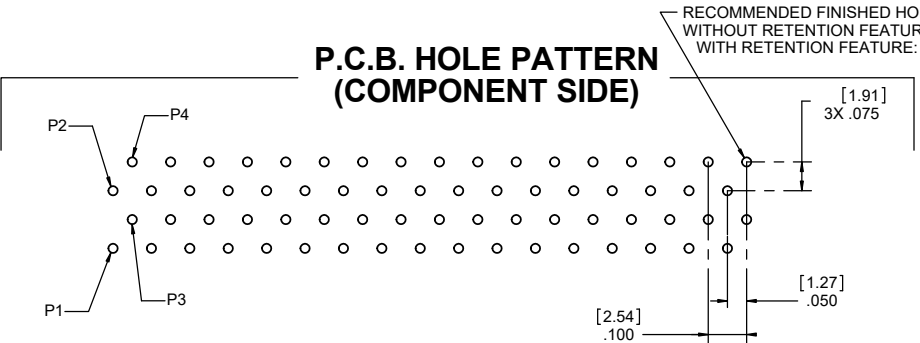
NOTES : UNLESS OTHERWISE SPECIFIED

TABULATION

PART NO.	NO. OF PIN POSITIONS	DIM. 'A'	DIM. 'B'	DIM. 'C'
CA-68MTSL-ST	68	1.886 [47.90]	1.650 [41.91]	.10 [2.5]
CA-80MTSL-ST	80	2.186 [55.52]	1.950 [49.53]	.10 [2.5]
CA-68MTSL-1T	68	1.886 [47.90]	1.650 [41.91]	.13 [3.3]
CA-80MTSL-1T	80	2.186 [55.52]	1.950 [49.53]	.13 [3.3]

OPTIONAL RETENTION FEATURE (CA-XXMTSL-XT-2)
(MAINTAINS CONNECTOR POSITION DURING SOLDERING)
LENGTH OF CRIMPED TAILS:
- ST-2 = .096+.003/-0.10
- 1T-2 = .126+.003/-0.10

P.C.B. HOLE PATTERN (COMPONENT SIDE)



RECOMMENDED FINISHED HOLE SIZE WITHOUT RETENTION FEATURE: Ø .024 [0.61] TYP.
WITH RETENTION FEATURE: Ø .031 [0.79] TYP.

DIMENSIONS ARE IN INCHES TOLERANCES ARE:
DECIMALS ANGLES
.XX ± .010 ± 3°
.XXX ± .005

DIMENSIONS IN BRACKETS [X.XX] ARE IN MILLIMETERS TOLERANCES ARE:
DECIMALS ANGLES
.X ± .25 ± 3°
.XX ± .13

DO NOT SCALE DRAWING

APPROVALS	DATE
DRAWN D. LANG	8-19-98
CHECKED A. JOCHEN	8-19-98

CIRCUIT ASSEMBLY CORP.
6 AUTRY SUITE 150, IRVINE, CALIFORNIA 92618

CONNECTOR ASSEMBLY-MTSL SERIES TRANSITION, CA-XXMTSL-XT-X "RoHS"

SIZE C	CODE IDENT NO. 52072	DRAWING NO. 620373	REV. T
--------	----------------------	--------------------	--------

SCALE: 4:1 SHEET 1 OF 1