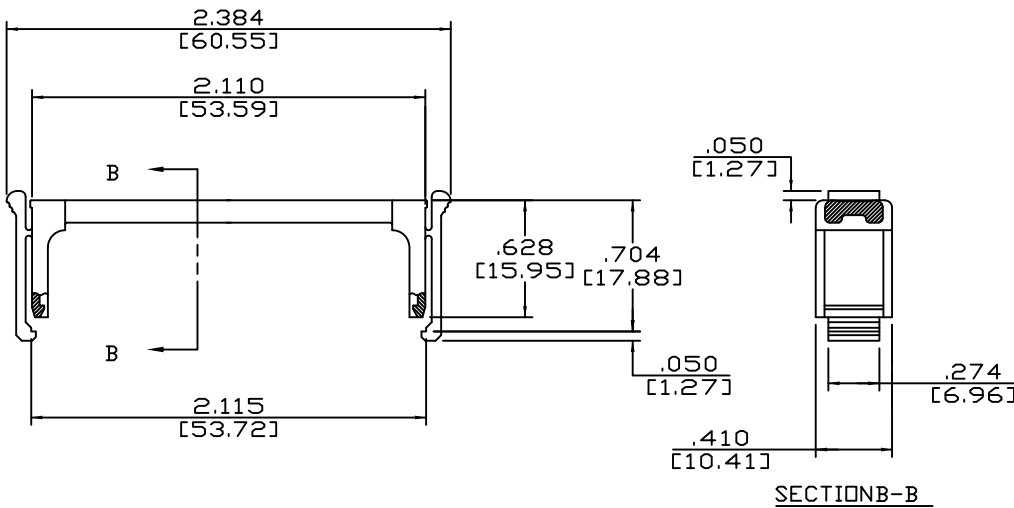


PART NO. CA-LSR68NFD

REVISIONS			
LTR	DESCRIPTION	DATE	APPROVED
A	INITIAL RELEASE SEE ECR 3428	10-5-95	A.J.
B	SEE ECD 2426	11-3-95	A.J.
C	SEE ECD 2429	PH 11-8-95	A.J.
D	SEE DD 4216	AJ 10-18-00	B.W.
E	SEE DD 7616	CP 05-24-21	T.L.



CA - LSR 68 NFD

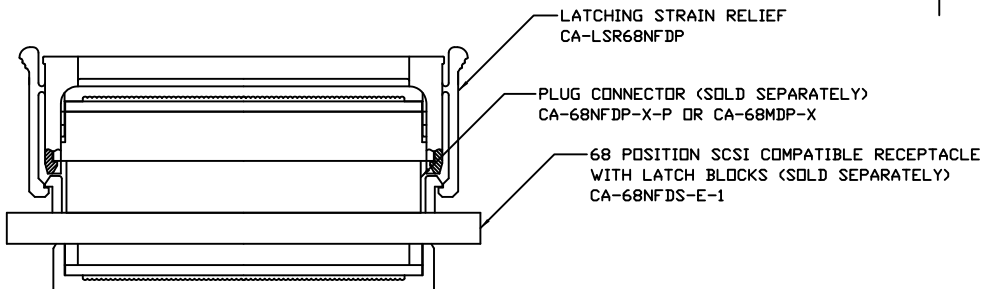
LATCHING  
STRAIN RELIEF

NUMBER OF  
PIN POSITIONS

INSULATION DISPLACEMENT  
D-TYPE PLUG

USED ON THE FOLLOWING  
CONNECTORS: CA-68NFD-X-P  
CA-68MDP-X

APPLICATION



3. MEETS THE REQUIREMENTS OF THE EUROPEAN PARLIAMENT AND THE RESTRICTION OF THE USE OF CERTAIN HAZARDOUS SUBSTANCES IN ELECTRICAL AND ELECTRONIC EQUIPMENT. (RoHS)

2. SPECIFICATION:

ENVIRONMENTAL:

TEMPERATURE RANGE: -55° C TO +125° C

MECHANICAL:

INSULATOR MATERIAL: GLASS FILLED THERMOPLASTIC  
COLOR BLACK, UL94V-0

1. INTERPRET DIMENSIONS AND TOLERANCES PER ASME Y14.5M-1994  
NOTES: UNLESS OTHERWISE SPECIFIED

DIMENSIONS ARE IN INCHES TOLERANCES ARE:		APPROVALS		DATE	<b>CIRCUIT ASSEMBLY CORP.</b> 6 AUTRY SUITE 150, IRVINE, CALIFORNIA 92618 <b>LATCHING STRAIN RELIEF NFD AND MDP SERIES "RoHS"</b>	
DECIMALS	ANGLES	DRAWN	P.HAAR	10/5/95		
.XX ±	± 3°	CHECKED	A.JOCHEN	10/5/95	SIZE	
.XXX ± .010		THE INFORMATION AND DESIGN DISCLOSED HEREIN WAS ORIGINATED BY AND IS THE PROPERTY OF CIRCUIT ASSEMBLY CORPORATION. CIRCUIT ASSEMBLY CORPORATION RESERVES ALL PATENT, PROPRIETARY, DESIGN, MANUFACTURING, REPRODUCTION, USE AND SALES RIGHTS THEREIN, AND TO ANY ARTICLE DISCLOSED HEREIN EXCEPT TO THE EXTENT RIGHTS ARE EXPRESSLY GRANTED TO OTHERS. THE FOREGOING DOES NOT APPLY TO VENDOR PROPRIETARY RIGHTS.		CODE IDENT NO.	DRAWING NO.	REV.
DIMENSIONS IN BRACKETS ARE IN MILLIMETERS TOLERANCES ARE:		DO NOT SCALE DRAWING		B 52072 620357		E
DECIMALS	ANGLES	SCALE: 2 : 1		SHEET 1 OF 1		
.X ±	±					
.XX ± .25						