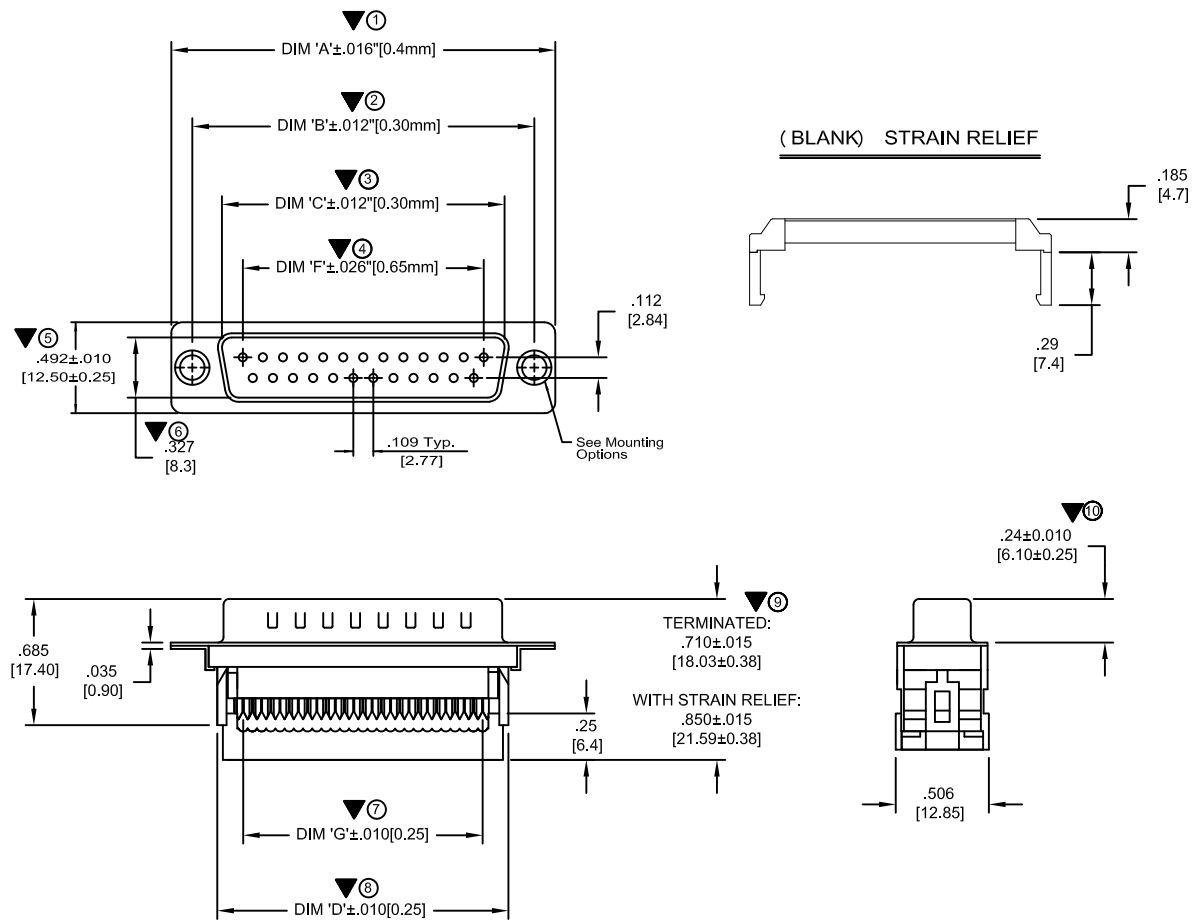
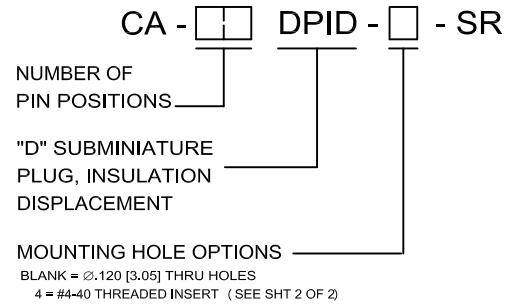


PART NO. CA-XXDPID-X-SR

REVISIONS				
LTR	DESCRIPTION	DATE	APPROVED	
A	INITIAL RELEASE SEE DO 3853	DL 2-2-00	A.J.	
B	SEE DO 4711	CP 12-12-01	A.J.	
C	SEE DO 5403	CP 02-24-04	A.J.	
D	SEE DO 6159	CP 07-27-06	I.M.	
E	SEE DO 7366	CP 07-20-16	I.M.	
F	SEE DO 7438	CP 02-12-18	T.H.	
G	SEE DO 7522	CP 04-30-19	T.L.	
H	SEE DO 7624	CP 08-13-21	T.L.	



ORDERING NOMENCLATURE:



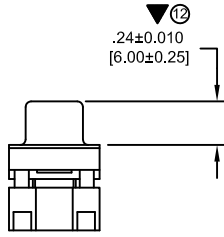
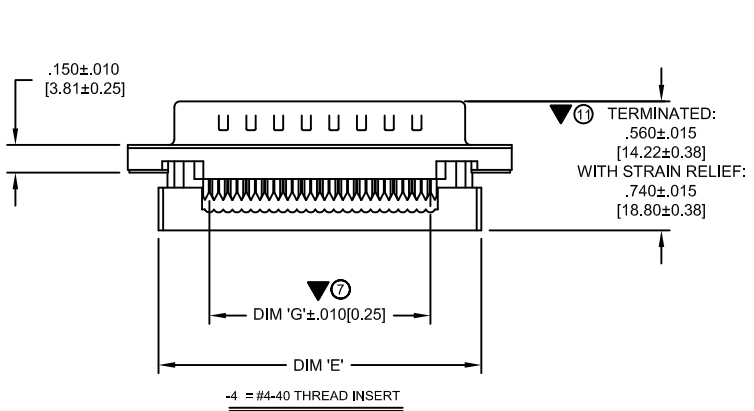
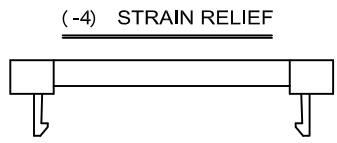
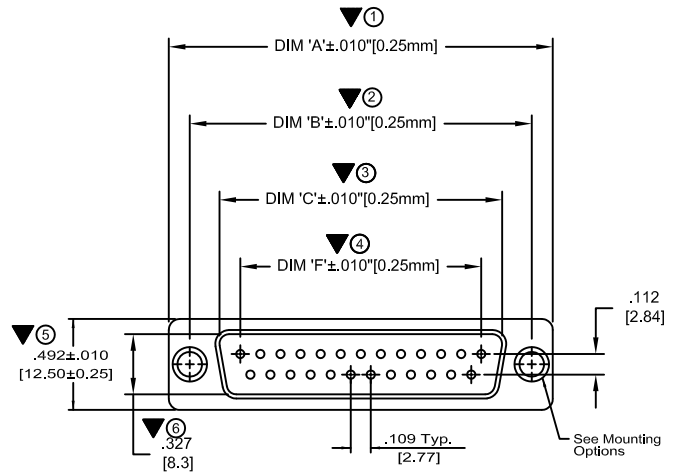
- 7. MARK "▼" DIMENSION MUST BE CONTROLLED
 - MARK "⊗" IS DIMENSION No.
 - 6. MEETS THE REQUIREMENTS OF THE EUROPEAN PARLIAMENT AND THE RESTRICTION OF THE USE OF CERTAIN HAZARDOUS SUBSTANCES IN ELECTRICAL AND ELECTRONIC EQUIPMENT. (RoHS)
 - 5. TEMPERATURE RANGE: -40°C TO +105°C
 - 4. PLATING:
 - CONTACT PLATING:
 - MATING AREA: GOLD FLASH
 - UNDERPLATE: NICKEL
 - IDT AREA: TIN
 - SHELL PLATING: TIN
 - 3. LIST OF MATERIALS:
 - INSULATOR MATERIAL: PBT GLASS FIBER, BLACK, UL94V-0
 - SHELL MATERIAL: SPCC
 - CONTACT MATERIAL: BRASS
 - 2. CURRENT RATING: 1AMP
 - 1. TERMINATES TO .050" PITCH, 26AWG OR 28AWG CABLE
- NOTES: UNLESS OTHERWISE SPECIFIED

TABULATION :

NO. OF POSITIONS	DIM. 'A'	DIM. 'B'	DIM. 'C'	DIM. 'D'	DIM. 'F'	DIM. 'G'
9	1.21 [30.8]	.984 [25.00]	.667 [16.95]	.62 [15.7]	.436 [11.08]	.400 [10.16]
15	1.54 [39.2]	1.311 [33.30]	.996 [25.30]	.94 [24.0]	.763 [19.39]	.800 [17.78]
25	2.09 [53.05]	1.854 [47.04]	1.534 [38.96]	1.49 [37.9]	1.309 [33.24]	1.200 [30.48]
37	2.73 [69.4]	2.500 [63.50]	2.182 [55.42]	2.14 [54.5]	1.963 [49.86]	1.800 [45.72]

DIMENSIONS ARE IN INCHES TOLERANCES ARE:		APPROVALS	DATE	CIRCUIT ASSEMBLY CORP. 6 AUTRY SUITE 150, IRVINE, CALIFORNIA 92618
DECIMALS ±.010 XXX ±.005		DRAWN D. LANG	2-2-00	
DIMENSIONS IN BRACKETS TOLERANCES ARE:		CHECKED A. JOCHEN	2-2-00	CONNECTOR ASSEMBLY - DPID SERIES CA-XXDPID-X-SR "RoHS"
DECIMALS ±.010 XXX ±.005		SIZE C		
DO NOT SCALE DRAWING		CODE IDENT NO. 52072		DRAWING NO. 620337
		SCALE: 2:1		REV. H

REVISIONS			
LTR	DESCRIPTION	DATE	APPROVED
	SEE SHEET 1 OF 2		



TABULATION :

NO. OF POSITIONS	DIM. 'A'	DIM. 'B'	DIM. 'C'	DIM. 'D'	DIM. 'E'	DIM. 'F'	DIM. 'G'
9	1.21 [30.8]	.984 [25.00]	.667 [16.95]	.62 [15.7]	.89 [22.5]	.436 [11.08]	.400 [10.16]
15	1.54 [39.2]	1.311 [33.30]	.996 [25.30]	.94 [24.0]	1.21 [30.8]	.763 [19.39]	.800 [17.78]
25	2.09 [53.1]	1.854 [47.10]	1.534 [38.96]	1.49 [37.9]	1.76 [44.7]	1.309 [33.24]	1.200 [30.48]
37	2.73 [69.4]	2.500 [63.50]	2.182 [55.42]	2.14 [54.5]	2.41 [61.3]	1.963 [49.86]	1.800 [45.72]

DIMENSIONS IN INCHES TOLERANCES ARE:	APPROVALS	DATE	CIRCUIT ASSEMBLY CORP. 6 AURTY SUITE 150, IRVINE, CALIFORNIA 92618
	DRAWN D. LANG	2-2-00	
DECIMALS .XX ±.010 .XXX ±.005	CHECKED A. JOCHEN	2-2-00	CONNECTOR ASSEMBLY - DPID SERIES CA-XXDPID-X-SR "RoHS"
ANGLES ±3°	THIS INFORMATION AND DESIGN DISCLOSED HEREIN WAS ORIGINATED BY AND IS THE PROPERTY OF CIRCUIT ASSEMBLY CORPORATION. CIRCUIT ASSEMBLY CORPORATION RESERVES ALL PATENT, PROPRIETARY, DESIGN, MANUFACTURING, REPRODUCTION, USE AND SALES RIGHTS THEREIN, AND TO ANY ARTICLE DISCLOSED HEREIN EXCEPT TO THE EXTENT RIGHTS ARE EXPRESSLY GRANTED TO OTHERS. THE FOREGOING DOES NOT APPLY TO VENDOR PROPRIETARY RIGHTS.		
DIMENSIONS IN BRACKETS [X.XX] ARE MILLIMETERS	SIZE C	CODE IDENT NO. 52072	DRAWING NO. 620337
DO NOT SCALE DRAWING	SCALE: 2:1		REV. H