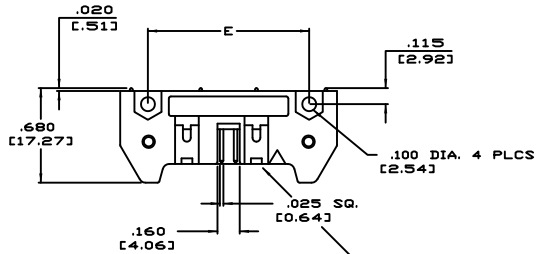


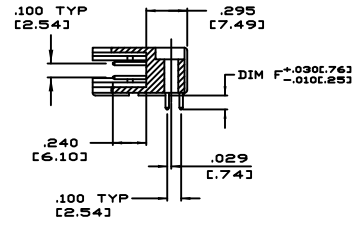
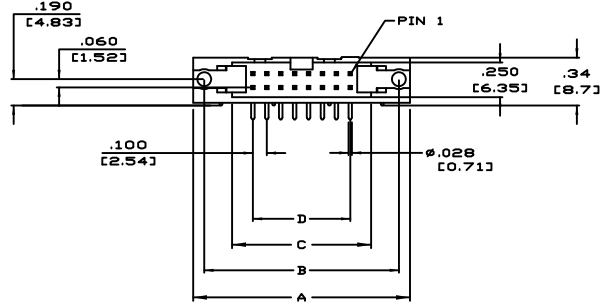
PART NO. CA-XXHRM-XXX-XXX

REVISIONS

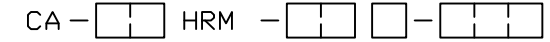
LTR	DESCRIPTION	DATE	APPROVED
A	RELEASE TO PRODUCTION	02-22-83	J. McA.
B	SEE ECD 487	07-07-83	J. McA.
C	SEE ECD 555	11-08-83	J. McA.
D	SEE ECD 578	01-20-84	J. McA.
E	REVISED AND REDRAWN, SEE ECD 800	12-06-85	A.J.
F	SEE DD 4693	CP 11-20-01	L.F.
G	SEE DD 5492	CP 05-21-04	A.J.
H	SEE DD 6495	CP 08-03-07	A.J.
J	SEE DD 7486	CP 10-04-18	T.L.
K	SEE DD 7594	CP 01-22-21	T.L.



THE POLARIZING FEATURE ON THIS END IS OMITTED ON CA-10HRM & CA-14HRM



ORDERING NOMENCLATURE:



NUMBER OF PIN POSITIONS
 HEADER
 RIGHT ANGLE
 TAIL TYPE:

M = .028 [0.71] ROUND PIN
 (C PLATING)
 SOLDER TAILS ONLY
 (CONFORMS TO MIL-C-83503/24A)

CONTACT LENGTH: (DIM F)

- 1 = .120 [3.05] (SHORT SOLDER TAIL)
- 2 = .160 [4.06] (LONG SOLDER TAIL)
- 3W = .610 [15.49] (3 LEVEL WRAP TAIL)

PLATING:

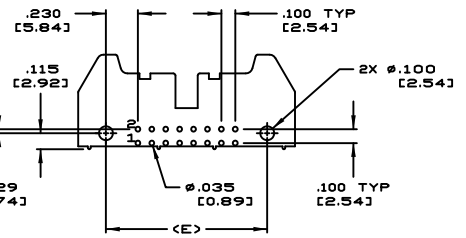
C = CONTACT AREA: .00015 [0.0038] GOLD
 F = CONTACT AREA: .00030 [0.0076] GOLD
 ALL: TAIL AREA: .000150 [0.0038] TIN
 UNDERPLATE: .000075 [0.0019] NICKEL

ADD IF REQUIRED:

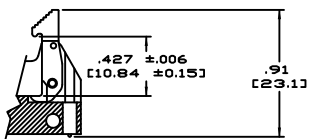
- BLANK = NO LATCHES
- S = SOCKET LATCH
(USE WITH ISD2)
- SR = STRAIN RELIEF LATCH
(USE WITH ISD2 WITH STRAIN RELIEF)
- SPT = 10 POSITION ONLY

NOTES: UNLESS OTHERWISE SPECIFIED

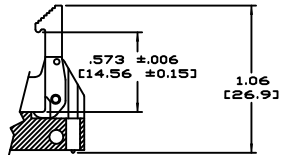
- POLARIZING SLOTS:
 - NO SLOT ON CA-10HRM
 - SINGLE SLOT ON CA-10HRM-SPT
 - SINGLE SLOT ON CA-14HRM THRU CA-40HRM
 - 3 SLOTS ON CA-50HRM & CA-60HRM
- INSULATOR MATERIAL: GLASS FILLED POLYESTER, GRAY, UL94V-0.
- CONTACT MATERIAL: PHOSPHOR BRONZE.
- FOR DETAIL SPECIFICATIONS, REFER TO SPECIFICATION NO. CA-100025.
- CONFORMS TO MIL-C-83503/24A (TAIL TYPE 'M' ONLY).
- MEETS THE REQUIREMENTS OF THE EUROPEAN PARLIAMENT AND THE RESTRICTION OF THE USE OF CERTAIN HAZARDOUS SUBSTANCES IN ELECTRICAL AND ELECTRONIC EQUIPMENT. (ROHS)



PC BOARD MOUNTING PATTERN



-S SOCKET LATCH
 USE WITH ISD2



-SR STRAIN RELIEF LATCH
 USE WITH ISD2 WITH STRAIN RELIEF

TABULATION:

NO. OF POSITIONS	A		B		C		D		E	
	IN	MM	IN	MM	IN	MM	IN	MM	IN	MM
10	1.26	32.0	1.100	27.94	.700	17.78	.400	10.16	.860	21.84
14	1.46	37.1	1.300	33.02	.900	22.86	.600	15.24	1.060	26.92
16	1.56	39.6	1.400	35.56	1.000	25.40	.700	17.78	1.160	29.46
20	1.76	44.7	1.600	40.64	1.200	30.48	.900	22.86	1.360	34.54
26	2.06	52.3	1.900	48.26	1.500	38.10	1.200	30.48	1.660	42.16
34	2.46	62.5	2.300	58.42	1.900	48.26	1.600	40.64	2.060	52.32
40	2.76	70.1	2.600	66.04	2.200	55.88	1.900	48.26	2.360	59.94
50	3.26	82.8	3.100	78.74	2.700	68.58	2.400	60.96	2.860	72.64
60	3.76	95.5	3.600	91.44	3.200	81.28	2.900	73.66	3.360	85.34

DIMENSIONS ARE IN INCHES TOLERANCES ARE:		APPROVALS		DATE	CIRCUIT ASSEMBLY CORP. 6 AUTRY SUITE #150, IRVINE, CALIFORNIA 92618 CONNECTOR ASSEMBLY - HRM SERIES CA-XXHRM-XXX-XXX, HEADER, RIGHT ANGLE 'RoHS'
DECIMALS	ANGLES	DRAWN	I.MORRELL	12-6-85	
.XX ± .010	± 3°	CHECKED	A.JOCHEN	12-6-85	SIZE
.XXX ± .005		THE INFORMATION AND DESIGN DISCLOSED HEREIN WAS ORIGINATED BY AND IS THE PROPERTY OF CIRCUIT ASSEMBLY CORPORATION. CIRCUIT ASSEMBLY CORPORATION RESERVES ALL PATENT, PROPRIETARY, DESIGN, MANUFACTURING, REPRODUCTION, USE AND SALES RIGHTS THEREIN, AND TO ANY ARTICLE DISCLOSED HEREIN EXCEPT TO THE EXTENT RIGHTS ARE EXPRESSLY GRANTED TO OTHERS. THE FORGING DOES NOT APPLY TO VENDOR PROPRIETARY RIGHTS.			CODE IDENT NO.
DECIMALS	ANGLES	DO NOT SCALE DRAWING			DRAWING NO.
.X ± .25	± 3°				620056
.XX ± .13					REV.
					K
		SCALE: 2 : 1			SHEET 1 OF 1