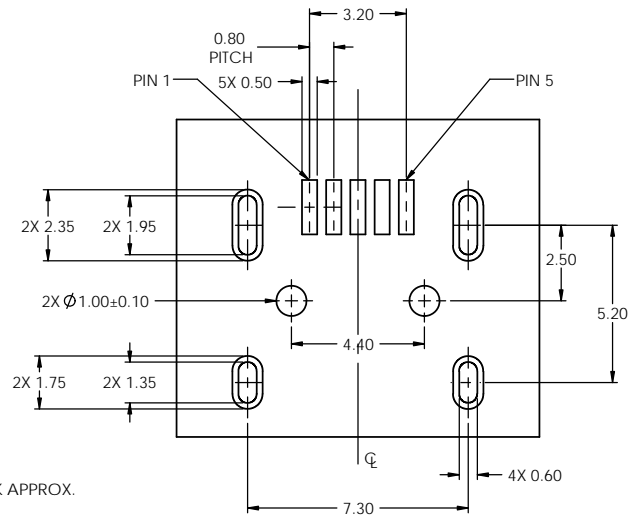
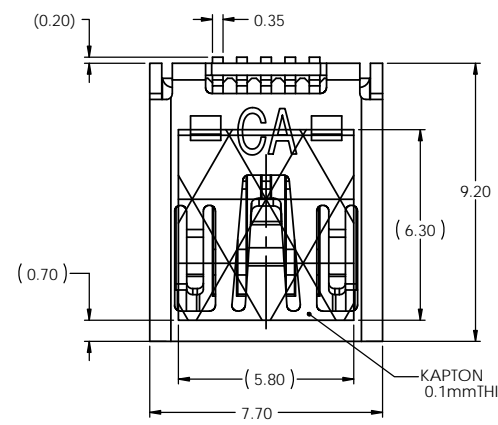


PART NO. CA-05MUSBR-X-XX

REVISIONS				
LTR	DESCRIPTION	DATE	APPROVED	
A	INITIAL RELEASE SEE DO 6751	CP 10-29-08	LF	
B	SEE DO 7018	CP 09-03-10	LF	
C	SEE DO 7594	CP 01-22-21	T.L.	



ORDERING NOMENCLATURE

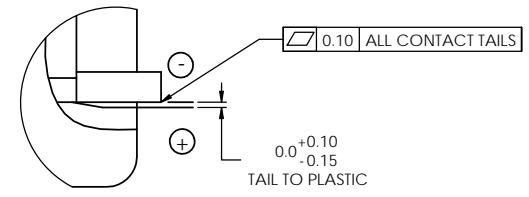
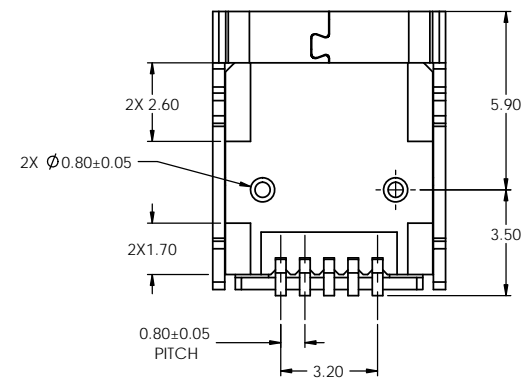
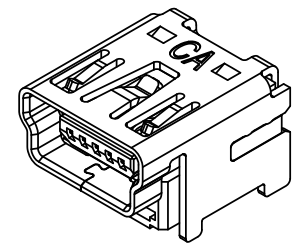
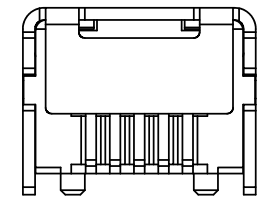
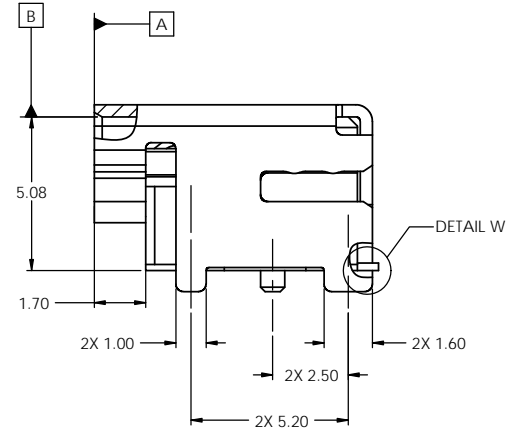
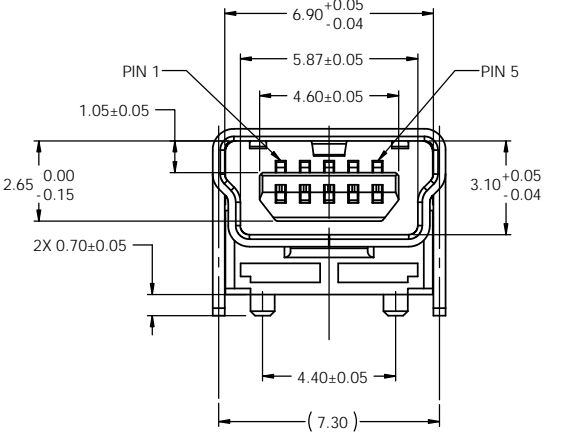
CA-05MUSBR - X - XX

ENCLOSURE MOUNT _____
MINI USB SOCKET 5.08mm HT

PLATING : _____
F = CONTACT AREA: .00076 [.000030"] GOLD
TAIL AREA : .00381 [.000150"] TIN
UNDERPLATE : .00191 [.000075"] NICKEL

TAIL TYPE _____
20 = HIGH RISE, SURFACE MOUNTING

RECOMMENDED PCB LAYOUT
COMPONENT SIDE SHOWN
(TOL.: ±0.05)



DETAIL DETAIL W
SCALE 32 : 1

2. SPECIFICATIONS :

MATERIAL :
HOUSING : LCP GLASS FILLED, UL94V-0, COLOR BLACK
SHELL : COPPER ALLOY, THICKNESS = 0.40±0.01mm
CONTACT : COPPER ALLOY, THICKNESS = 0.25±0.01mm
CONTACT PLATING : SEE ORDERING NOMENCLATURE

1. MEETS THE REQUIREMENTS OF THE EUROPEAN PARLIAMENT AND THE RESTRICTION OF THE USE OF CERTAIN HAZARDOUS SUBSTANCES IN ELECTRICAL AND ELECTRONIC EQUIPMENT.(RoHS)

NOTES : UNLESS OTHERWISE SPECIFIED

DIMENSIONS ARE IN MILLIMETERS TOLERANCES ARE:		APPROVALS	DATE
DECIMALS X ± .25 XX ± .13	ANGLES ± 3°	DRAWN CUONG P.	10-29-08
DIMENSIONS IN BRACKETS[X.XX] ARE IN INCHES TOLERANCES ARE:		CHECKED LEROY FONG	10-29-08
DECIMALS XX XXX	ANGLES ±	THE INFORMATION AND DESIGN DISCLOSED HEREIN WAS ORIGINATED BY AND IS THE PROPERTY OF CIRCUIT ASSEMBLY CORPORATION. CIRCUIT ASSEMBLY CORPORATION RESERVES ALL PATENT, PROPRIETARY, DESIGN, MANUFACTURING, REPRODUCTION, USE AND SALES RIGHTS THERE TO, AND TO ANY ARTICLE DISCLOSED HEREIN EXCEPT TO THE EXTENT RIGHTS ARE EXPRESSLY GRANTED TO OTHERS. THE FOREGOING DOES NOT APPLY TO VENDOR PROPRIETARY RIGHTS.	
DO NOT SCALE DRAWING			

CA CIRCUIT ASSEMBLY CORP. 6 AUTRY SUITE 150, IRVINE, CALIFORNIA 92618			
CONNECTOR ASSEMBLY - MUSB SERIES CA-05MUSBR-X-XX, MINI-B, SMT. 'ROHS'			
SIZE C	CODE IDENT NO. 52072	DRAWING NO. 610351	REV. C
SCALE: 8:1		SHEET 1 OF 1	