

PART NO. CA-29SAS-F-21

REVISIONS				
LTR	DESCRIPTION		DATE	APPROVED
A	INITIAL RELEASE SEE DO 6120	CP	06-08-06	A.J.
B	SEE DO 6377	CP	03-01-07	A.J.
C	SEE DO 7167	CP	12-14-11	I.M.
D	SEE DO 7530	CP	06-26-19	T.L.
E	SEE DO 7613	CP	04-26-21	T.L.

ORDERING NOMENCLATURE :

CA-29SAS-F-21

NUMBER OF CONTACT POS _____

PLATING _____

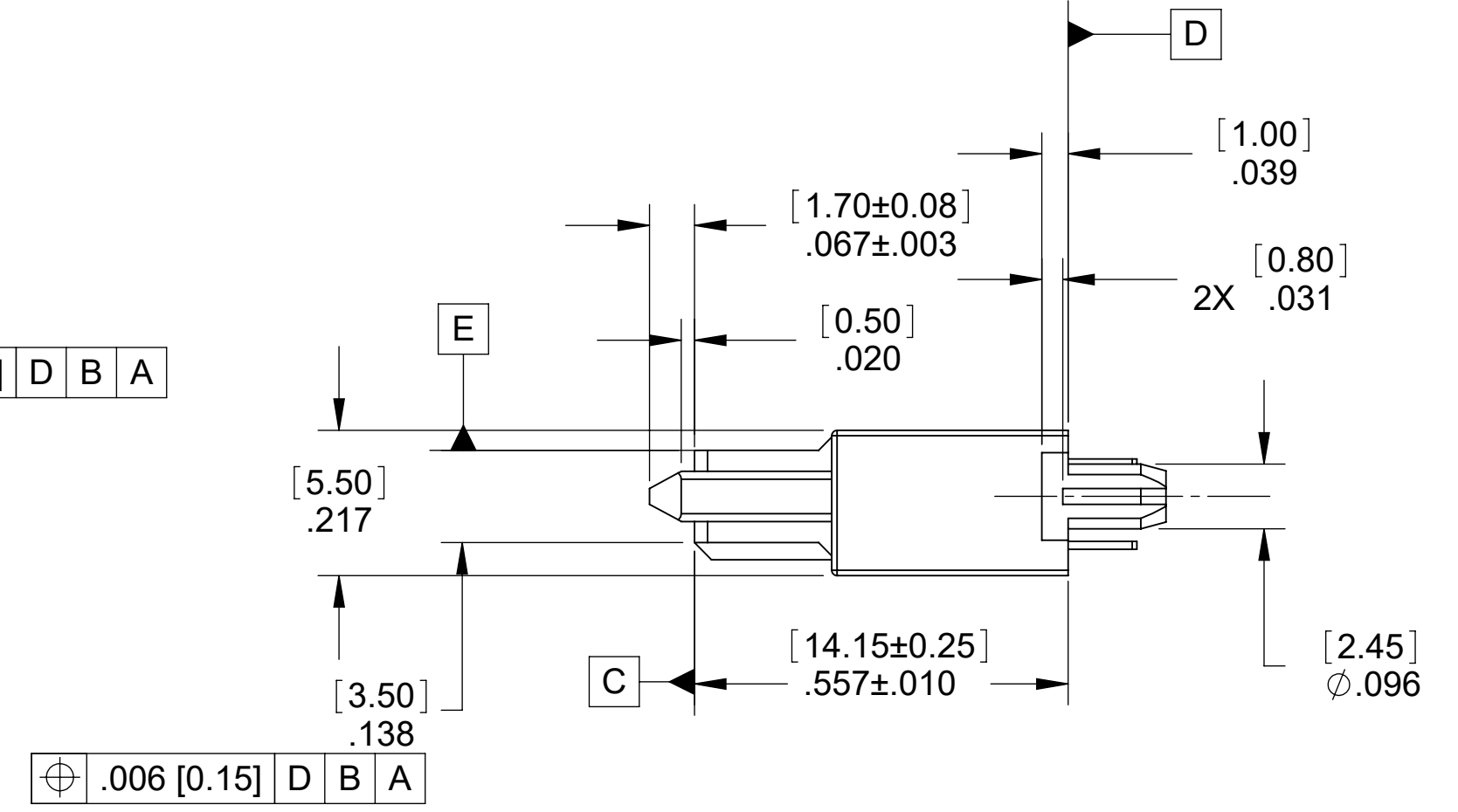
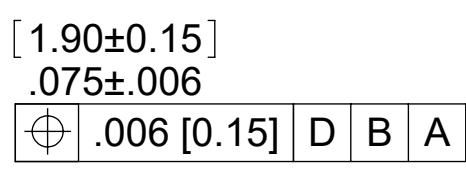
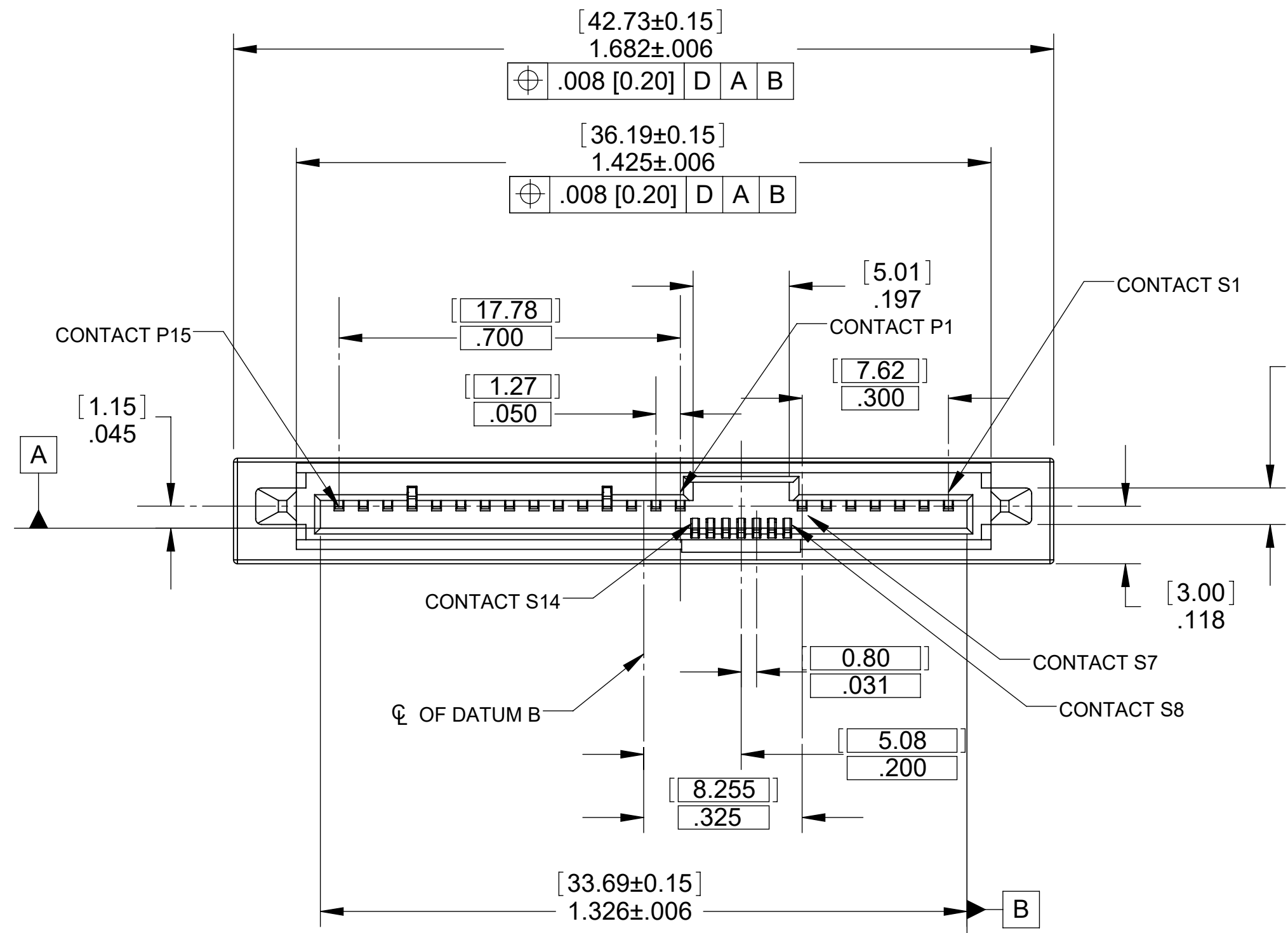
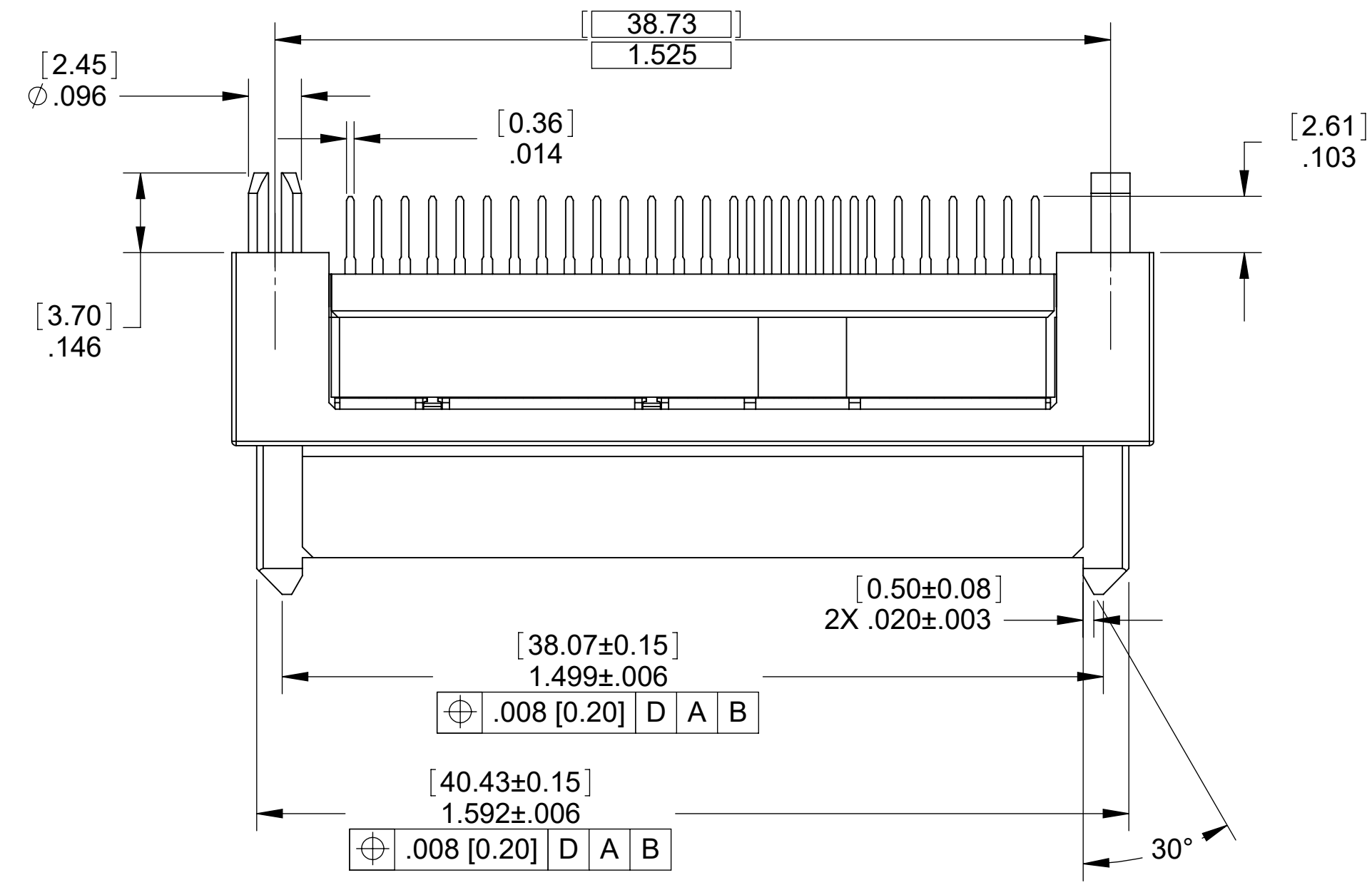
F = CONTACT AREA : .000030 [.00076] GOLD
 SOLDER TAIL AREA : .000150 [.00381] TIN
 UNDERPLATE : .000050 [.00127] NICKEL MIN.

HEIGHT _____

2 = EXTENDED

CONTACT STYLE _____

1 = THROUGH HOLE



DIMENSIONS ARE IN INCHES TOLERANCES ARE:		APPROVALS	DATE
DECIMALS	ANGLES	DRAWN CUONG P.	6-08-06
.XX ±.010	±3°	CHECKED A.JOCHEN	6-08-06
.XXX ±.005			
DIMENSIONS IN BRACKETS [X.XX] ARE IN MILLIMETERS TOLERANCES ARE:		THE INFORMATION AND DESIGN DISCLOSED HEREIN WAS ORIGINATED BY AND IS THE PROPERTY OF CIRCUIT ASSEMBLY CORPORATION. CIRCUIT ASSEMBLY CORPORATION RESERVES ALL PATENT, PROPRIETARY, DESIGN, MANUFACTURING, REPRODUCTION, USE AND SALES RIGHTS THERETO, AND TO ANY ARTICLE DISCLOSED HEREIN EXCEPT TO THE EXTENT RIGHTS ARE EXPRESSLY GRANTED TO OTHERS. THE FOREGOING DOES NOT APPLY TO VENDOR PROPRIETARY RIGHTS.	
DECIMALS	ANGLES		
X ±.25	±3°		
.XX ±.13			
DO NOT SCALE DRAWING			

CA CIRCUIT ASSEMBLY CORP.			
6 AUTRY SUITE 150, IRVINE, CALIFORNIA 92618			
CONNECTOR ASSEMBLY SAS SERIES			
CA-29SAS-F-21, EXT. HT. THROUGH HOLE			
"RoHS"			
SIZE	CODE IDENT NO.	DRAWING NO.	REV.
C	52072	610330	E
SCALE: 4:1		SHEET 1 OF 2	

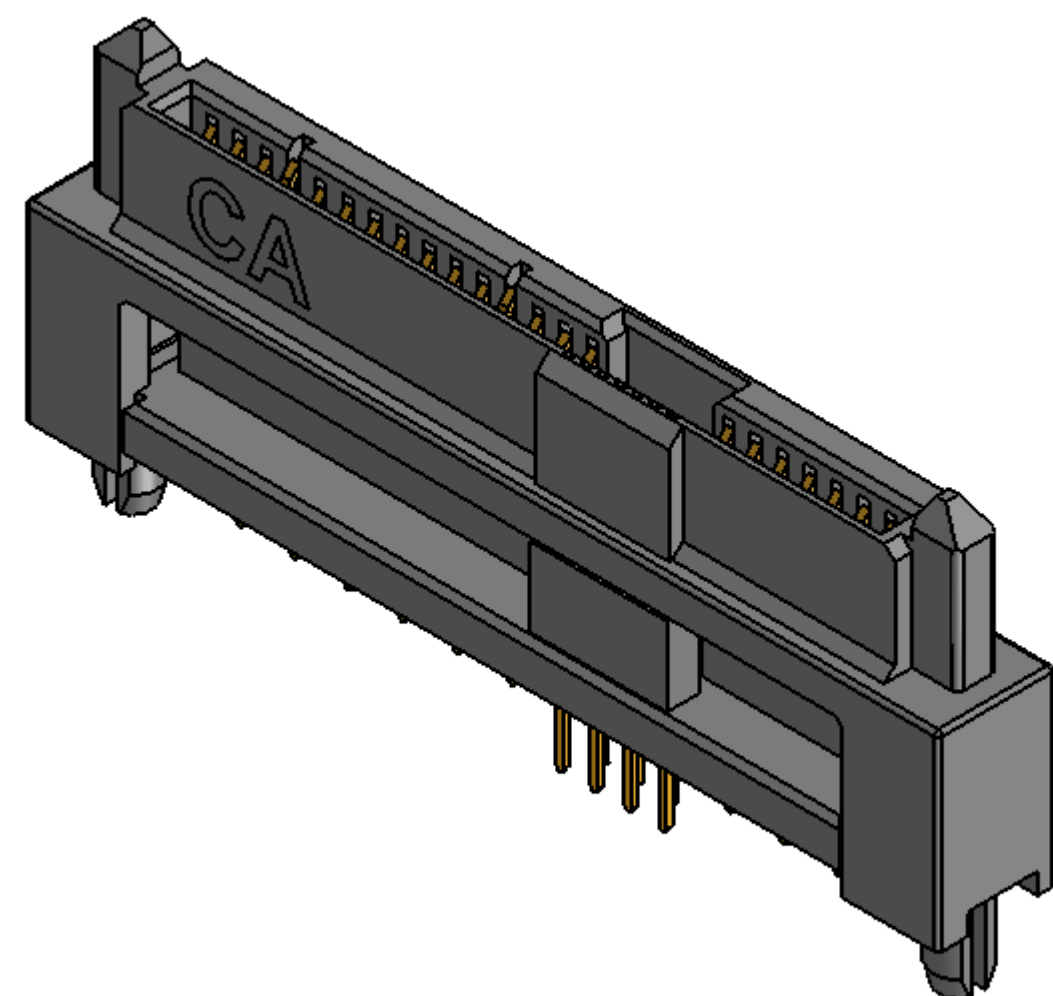
4

3

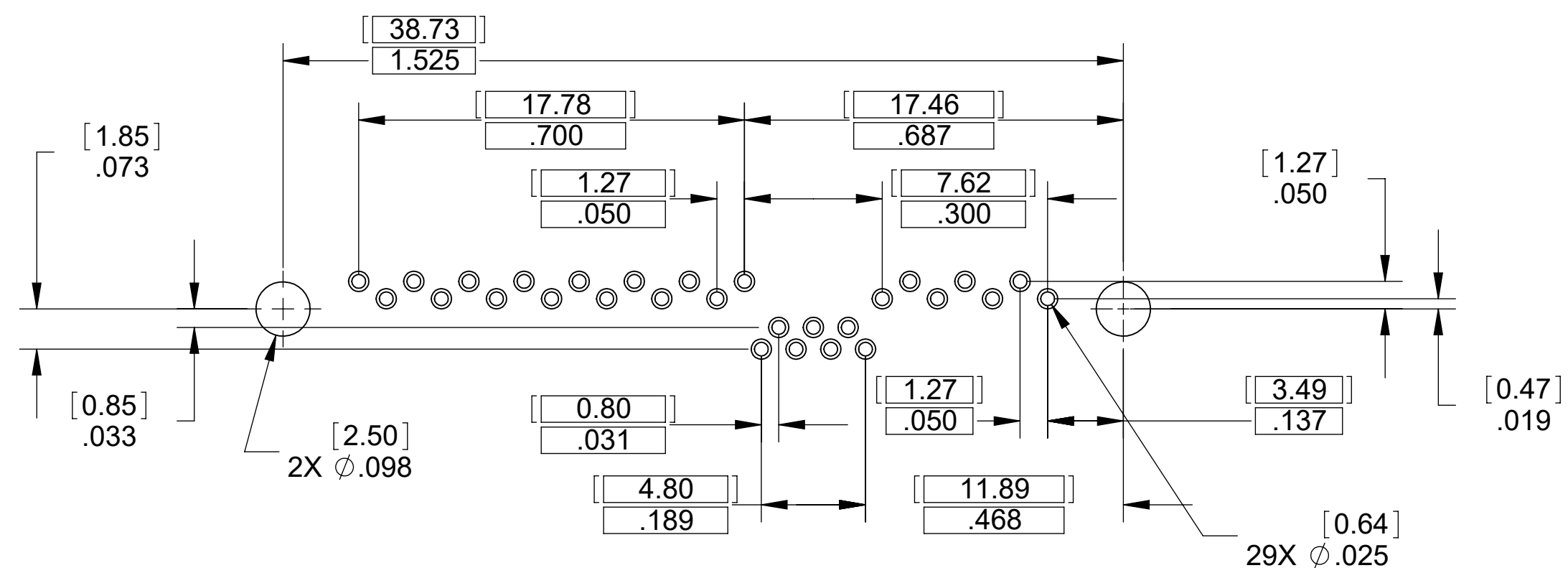
2

1

REVISIONS			
LTR	DESCRIPTION	DATE	APPROVED
	SEE SHEET 1 OF 2		



**RECOMMENDED P.C. BOARD LAYOUT
COMPONENT SIDE SHOWN**



4. MEETS THE REQUIREMENTS OF THE EUROPEAN AND THE RESTRICTION OF THE USE OF CERTAIN HAZARDOUS SUBSTANCES IN ELECTRICAL AND ELECTRONIC EQUIPMENT. (RoHS)

3. REFER CAC DWG # CAO-H030 FOR PACKAGING

2. REFER CAC DWG # H100030 FOR SPECIFICATION

1. MATERIALS

HOUSING : HIGH TEMPERATURE THERMOPLASTIC UL 94V-0, COLOR : BLACK

CONTACT : PHOSPHOR BRONZE, C5210

CONTACT PLATING : (SEE ORDERING NOMENCLATURE)

NOTES : UNLESS OTHERWISE SPECIFIED

DIMENSIONS ARE IN INCHES
TOLERANCES ARE:
DECIMALS ANGLES
.XX ±.010 ±3°
.XXX ±.005

DIMENSIONS IN BRACKETS
[X.XX] ARE IN MILLIMETERS
TOLERANCES ARE:
DECIMALS ANGLES
.X ±.25 ±3°
.XX ±.13

DO NOT SCALE DRAWING

APPROVALS	DATE
DRAWN CUONG P.	6-08-06
CHECKED A.JOCHEN	6-08-06

THE INFORMATION AND DESIGN DISCLOSED HEREIN WAS ORIGINATED BY AND IS THE PROPERTY OF CIRCUIT ASSEMBLY CORPORATION. CIRCUIT ASSEMBLY CORPORATION RESERVES ALL PATENT, PROPRIETARY, DESIGN, MANUFACTURING, REPRODUCTION, USE AND SALES RIGHTS THERETO, AND TO ANY ARTICLE DISCLOSED HEREIN EXCEPT TO THE EXTENT RIGHTS ARE EXPRESSLY GRANTED TO OTHERS. THE FOREGOING DOES NOT APPLY TO VENDOR PROPRIETARY RIGHTS.

CAC CIRCUIT ASSEMBLY CORP.
6 AUTRY SUITE 150, IRVINE, CALIFORNIA 92618

CONNECTOR ASSEMBLY_SAS SERIES
CA-29SAS-F-21, EXT. HT. THROUGH HOLE
"RoHS"

SIZE	CODE IDENT NO.	DRAWING NO.	REV.
C	52072	610330	E

SCALE: 4:1 SHEET 2 OF 2

4

3

2

1