

PART NO. CA-02SJO-MA

| REVISIONS | | | | |
|-----------|-----------------------------|--------------|----------|--|
| LTR | DESCRIPTION | DATE | APPROVED | |
| A | INITIAL RELEASE SEE DO 4473 | C.P. 5-14-01 | A.J. | |
| B | SEE DO 6171 | C.P. 8-10-06 | I.M. | |
| C | SEE DO 7521 | C.P. 4-19-19 | T.L. | |
| D | SEE DO 7613 | C.P. 4-26-21 | T.L. | |

THE NOMENCLATURE :

CA - 02SJO - MA

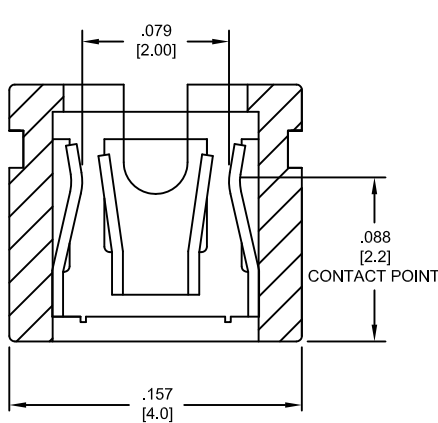
NO. OF POSITIONS _____

SHORTING JUMPER OPEN _____

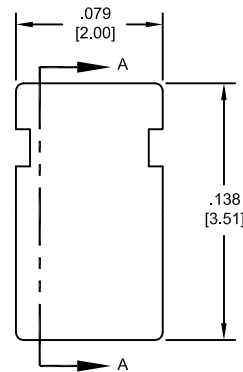
M = 2MM CENTERLINE _____

PLATING _____

A = GOLD FLASH OVER NICKEL



SECTION A-A



2. SPECIFICATIONS :

ENVIRONMENTAL :

TEMPERATURE RANGE : -55°C TO + 105°C

MECHANICAL :

INSULATOR MATERIAL : GLASS FILLED POLYESTER, BLACK, UL94V-0

CONTACT MATERIAL : COPPER ALLOY

ELECTRICAL :

CURRENT RATING : 2 AMP

1. MEETS THE REQUIREMENTS OF THE EUROPEAN PARLIAMENT AND THE RESTRICTION OF THE USE OF CERTAIN HAZARDOUS SUBSTANCES IN ELECTRICAL AND ELECTRONIC EQUIPMENT. (RoHS)

NOTES : UNLESS OTHERWISE SPECIFIED

| | | | |
|--|--------|--|----------------|
| DIMENSIONS ARE IN INCHES TOLERANCES ARE: | | APPROVALS | DATE |
| DECIMALS | ANGLES | DRAWN CUONG.P. | 5-8-01 |
| .XX ± .010 | ± 3° | CHECKED A.JOCHEN | 5-14-01 |
| .XXX ± .005 | | THE INFORMATION AND DESIGN DISCLOSED HEREIN WAS ORIGINATED BY AND IS THE PROPERTY OF CIRCUIT ASSEMBLY CORPORATION. CIRCUIT ASSEMBLY CORPORATION RESERVES ALL PATENT, PROPRIETARY, DESIGN, MANUFACTURING, REPRODUCTION, USE AND SALES RIGHTS HEREIN, AND TO ANY ARTICLE DISCLOSED HEREIN EXCEPT TO THE EXTENT RIGHTS ARE EXPRESSLY GRANTED TO OTHERS. THIS FOREGOING DOES NOT APPLY TO VENDOR PROPRIETARY RIGHTS. | |
| DIMENSIONS IN BRACKETS [X.XX] ARE IN MILLIMETERS TOLERANCES ARE: | | SIZE | CODE IDENT NO. |
| DECIMALS | ANGLES | C | 52072 |
| .X ± .25 | ± 3° | DRAWING NO. | REV. |
| .XX ± .13 | | 610251 | D |
| DO NOT SCALE DRAWING | | SCALE: 20:1 | SHEET 1 OF 1 |

CA CIRCUIT ASSEMBLY CORP.
6 ATRY SUITE 150, IRVINE, CALIFORNIA 92618

CONNECTOR ASEMBLY-SJ (2MM)SERIES CA-02SJO-MA SHORTING JUMPER-OPEN, "RoHS"

| | | | |
|-------------|----------------|--------------|------|
| SIZE | CODE IDENT NO. | DRAWING NO. | REV. |
| C | 52072 | 610251 | D |
| SCALE: 20:1 | | SHEET 1 OF 1 | |