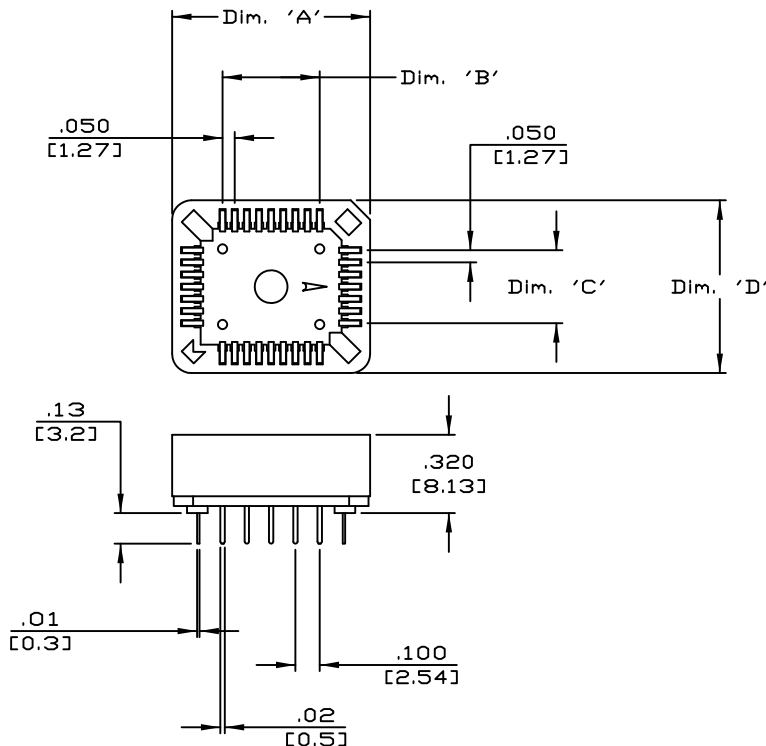


PART NO. CA-XXSPC-T

REVISIONS

LTR	DESCRIPTION	DATE	APPROVED
A	INITIAL RELEASE SEE DD 3865	DL 2-8-00	A.J.
B	SEE DD 4615	C.F 9-10-01	A.J.
C	SEE DD 7607	C.F 3-22-21	T.L.



TABULATION

NO OF POSITIONS	DIM. 'A'	DIM. 'B'	DIM. 'C'	DIM. 'D'
20	.610 [15.50]	.200 [5.08]	.200 [5.08]	.610 [15.50]
28	.720 [18.30]	.300 [7.62]	.300 [7.62]	.720 [18.30]
32	.838 [21.30]	.400 [10.16]	.300 [7.62]	.838 [21.30]
44	.925 [23.50]	.500 [12.70]	.500 [12.70]	.925 [23.50]
52	1.019 [25.90]	.600 [15.24]	.600 [15.24]	1.019 [25.90]
68	1.224 [31.10]	.800 [20.32]	.800 [20.32]	1.224 [31.10]
84	1.417 [36.00]	1.000 [25.40]	1.000 [25.40]	1.417 [36.00]

7. MEETS THE REQUIREMENTS OF THE EUROPEAN PARLIAMENT AND THE RESTRICTION OF THE USE OF CERTAIN HAZARDOUS SUBSTANCES IN ELECTRICAL AND ELECTRONIC EQUIPMENT. (RoHS)

6. FOR PIN NUMBER LAYOUT PATTERN SEE CA SPECIFICATION 100136.

5. TEMPERATURE RANGE -55°C TO 105°C

4. CURRENT RATING: 1 AMP

3. CONTACT PLATING: TIN

2. CONTACT MATERIAL: COPPER ALLOY

1. INSULATOR MATERIAL: CLASS FILLED POLYESTER, BLACK, UL94v-0

NOTES : UNLESS OTHERWISE SPECIFIED

DIMENSIONS ARE IN INCHES
TOLERANCES ARE:
DECIMALS ANGLES
.XX ± .010 ± 3°
.XXX ± .005

DIMENSIONS IN BRACKETS
(X.XX) ARE IN MILLIMETERS
TOLERANCES ARE:
DECIMALS ANGLES
.X ± 0.25 ± 3°
.XX ± 0.13

DO NOT SCALE DRAWING

APPROVALS	DATE
DRAWN D. LANG	2-8-00
CHECKED A. JOCHEN	2-8-00

THE INFORMATION AND DESIGN DISCLOSED HEREIN WAS ORIGINATED BY AND IS THE PROPERTY OF CIRCUIT ASSEMBLY CORPORATION. CIRCUIT ASSEMBLY CORPORATION RESERVES ALL PATENT, PROPRIETARY, DESIGN, MANUFACTURING, REPRODUCTION, USE AND SALES RIGHTS THEREOF, AND TO ANY ARTICLE DISCLOSED HEREIN EXCEPT TO THE EXTENT RIGHTS ARE EXPRESSLY GRANTED TO OTHERS. THE FOREGOING DOES NOT APPLY TO VENDOR PROPRIETARY RIGHTS.

CA CIRCUIT ASSEMBLY CORP.
6 AUTRY SUITE 150, IRVINE, CALIFORNIA 92618

CONNECTOR ASSEMBLY - SPC SERIES
CA-XXSPC
"RoHS"

SIZE B	CODE IDENT NO. 52072	DRAWING NO. 610213	REV. C
--------	----------------------	--------------------	--------

SCALE: 2 : 1 SHEET 1 OF 1