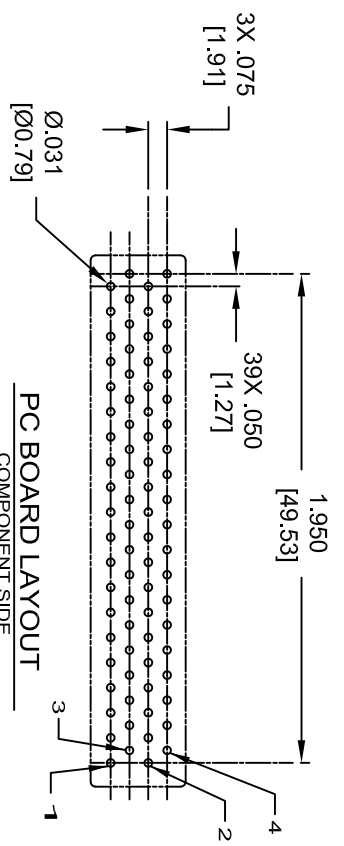
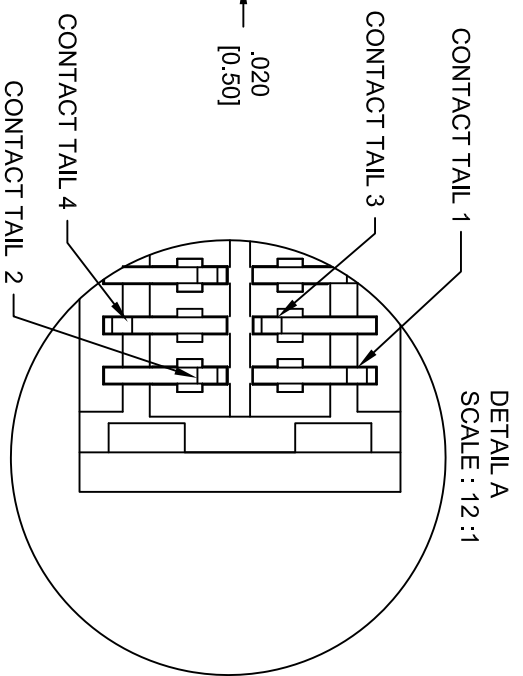
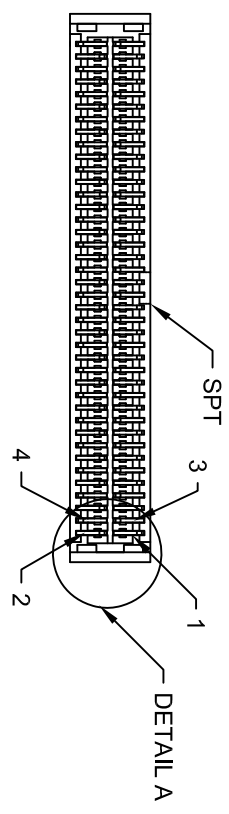
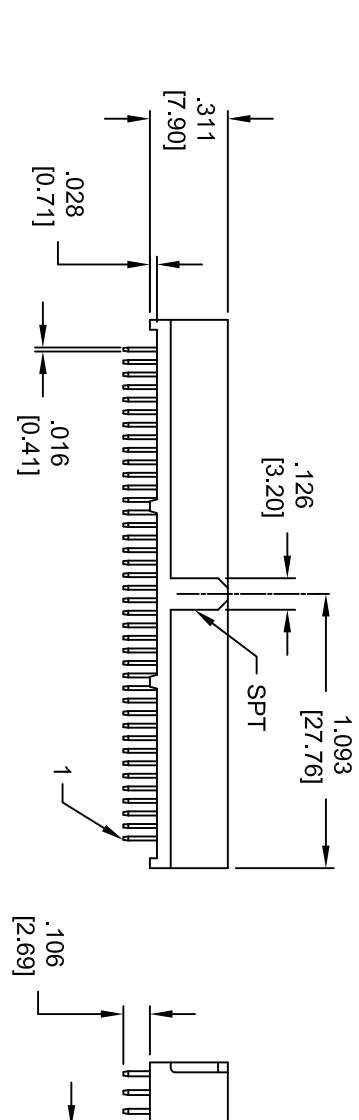
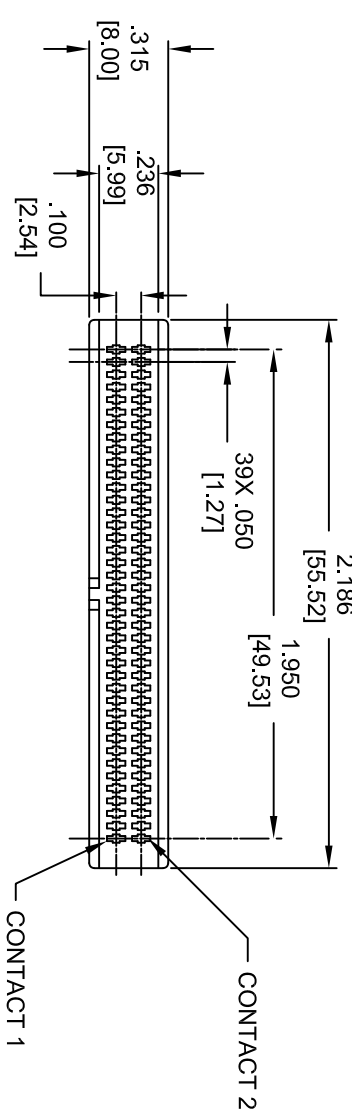


REVISIONS			
LTR	DESCRIPTION	DATE	APPROVED
A	INITIAL RELEASE SEE DO 3057	DL 4-21-98	P.H.
B	SEE DO 3065	DL 5-1-98	P.H.
C	SEE DO 6991	CP 6-30-10	A.J.
D	SEE DO 7548	CP 12-03-19	T.L.
E	SEE DO 7613	CP 04-26-21	T.L.



2. MEETS THE REQUIREMENTS OF THE EUROPEAN PARLIAMENT AND THE RESTRICTION OF THE USE OF CERTAIN HAZARDOUS SUBSTANCES IN ELECTRICAL AND ELECTRONIC EQUIPMENT. (ROHS)

1. INTERPRET DIMENSIONS AND TOLERANCES PER ASME Y14.5M - 1994

NOTES: UNLESS OTHERWISE SPECIFIED

DIMENSIONS ARE IN INCHES		APPROVALS		DATE	
TOLERANCES ARE:		DESIGNED BY	D. LANG	4-21-98	
DECIMALS	.25	CHECKED BY	P. HAAR	4-21-98	
FRACTIONS	XX ± .005	CIRCUIT ASSEMBLY CORP.			
DIMENSIONS IN BRACKETS (XX) ARE MILLIMETERS		8 AUIR/SUITE 150, IRVINE, CALIFORNIA 92618			
TOLERANCES ARE:		CONNECTOR ASSEMBLY - NANOFLEX			
DECIMALS	.25	80 POSITION NFVS SERIES			
FRACTIONS	XX ± .13	"ROHS"			
DO NOT SCALE DRAWING		SIZE	C	CODE IDENT NO.	52072
		SCALE	3:1	DRAWING NO.	610193
				REV	E
				SHEET 1 OF 1	