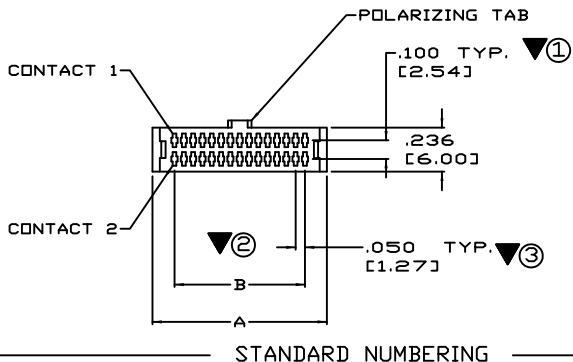
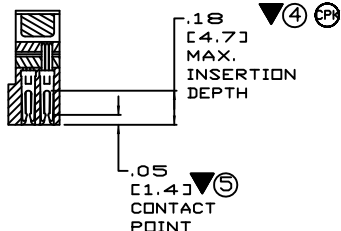
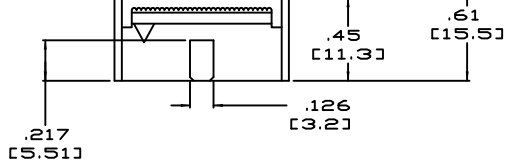
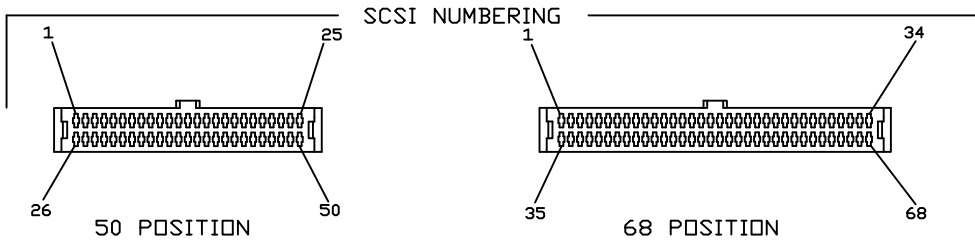


PART NO. CA-XXNFS-XXX-XX

STRAIN RELIEF



STANDARD NUMBERING



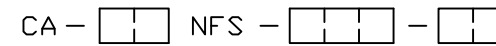
TABULATION:

NO. OF POSITIONS	A		B	
	IN	MM	IN	MM
10	.436	11.08	.200	5.08
16	.586	14.89	.350	8.89
20	.686	17.43	.450	11.43
26	.836	21.24	.600	15.24
34	1.036	26.32	.800	20.32
40	1.186	30.13	.950	24.13
50	1.436	36.48	1.200	30.48
60	1.686	42.83	1.450	36.83
64	1.786	45.37	1.550	39.37
68	1.886	47.90	1.650	41.91
80	2.186	55.53	1.950	49.53
100	2.686	68.23	2.450	62.23

REVISIONS

LTR	DESCRIPTION	DATE	APPROVED
A	INITIAL RELEASE SEE ECR 1973	11-07-91	A.J.
B	SEE ECD 1745	3-31-91	A.J.
C	SEE ECD 2204	9-27-94	A.J.
D	SEE ECD 2377	6-30-95	A.J.
E	SEE DD 6027	CP 3-08-06	A.J.
F	SEE DD 6452	CP 6-11-07	I.M.
G	SEE DD 7284	CP 8-21-14	I.M.
H	SEE DD 7315	CP 3-05-15	I.M.
J	SEE DD 7522	CP 4-30-19	T.L.
K	SEE DD 7604	CP 2-24-21	T.L.

ORDERING NOMENCLATURE:



NUMBER OF CONTACT POSITIONS

NANOFLEX INSULATION DISPLACEMENT SOCKET

PLATING:

12G = CONTACT AREA: .000012 [0.00030] GOLD
 IDC AREA: .000100 [0.00254] TIN
 UNDERPLATE: .000075 [0.00191] NICKEL

STRAIN RELIEF:

BLANK = NO STRAIN RELIEF
 SR = WITH STRAIN RELIEF

- PARTS SHALL BE: "MOISTURE SENSITIVITY LEVEL # 1".
- MARK "▼" DIMENSION MUST BE CONTROLLED
- MARK "(X)" IS DIMENSION NO.
- MARK "(CPK)" MUST BE CONTROLLED BY CPK.
- MEETS THE REQUIREMENTS OF THE EUROPEAN PARLIAMENT AND THE RESTRICTION OF THE USE OF CERTAIN HAZARDOUS SUBSTANCES IN ELECTRICAL AND ELECTRONIC EQUIPMENT. (RoHS)
- INSULATOR MATERIAL: GLASS FILLED POLYESTER, UL94V-0
 COLOR: CUSTOM BLUE (PANTONE 298C -299C)
- CONTACT MATERIAL: PHOSPHOR BRONZE.
- FOR DETAIL SPECIFICATIONS, REFER TO SPECIFICATION NO. 100178.
- INTERPRET DIMENSIONS AND TOLERANCES PER ANSI Y14.5M-1982

NOTES: UNLESS OTHERWISE SPECIFIED.

DIMENSIONS ARE IN INCHES TOLERANCES ARE:		APPROVALS		DATE	CIRCUIT ASSEMBLY CORP. 6 AUTRY SUITE 150, IRVINE, CALIFORNIA 92618 CONNECTOR ASSEMBLY - NFS SERIES CA-XXNFS-XX-XXX "RoHS"
DECIMALS	ANGLES	DRAWN	R.PRITCHETT	11-06-91	
JXX ± .010	± 3°	CHECKED	A.JOCHEN	11-07-91	SIZE CODE IDENT NO. DRAWING NO. REV. C 52072 610168 K
DIMENSIONS IN BRACKETS [] ARE IN MILLIMETERS TOLERANCES ARE: DECIMALS ANGLES X ± .25 ± 3° JXX ± .20		THE INFORMATION AND DESIGN DISCLOSED HEREIN WAS ORIGINATED BY AND IS THE PROPERTY OF CIRCUIT ASSEMBLY CORPORATION. CIRCUIT ASSEMBLY CORPORATION RESERVES ALL PATENT, PROPRIETARY DESIGN, AND SALES RIGHTS THEREIN, AND TO ANY ARTICLE DISCLOSED HEREIN EXCEPT TO THE EXTENT RIGHTS ARE EXPRESSLY GRANTED TO OTHERS. THE FOREGOING DOES NOT APPLY TO VENDOR PROPRIETARY RIGHTS.		SCALE: 2 : 1	SHEET 1 OF 1