

PART NO. CA-XXEC-X-XX

REVISIONS			
LTR	DESCRIPTION	DATE	APPROVED
A	RELEASE FOR PRODUCTION	04-03-80	JMCA
B	SEE ECO 251	10-28-81	A.J.
C	SEE ECO 377	11-09-82	JMcA
D	SEE ECO 400	12-14-82	JMcA
E	SEE ECO 478	06-10-83	JMcA
F	SEE ECO 485	06-28-83	JMcA
G	SEE ECO 785	07-31-85	A.J.
H	REVISED AND REDRAWN, ECO 870	11-10-86	A.J.
J	SEE ECO 2499	DL 4-2-96	A.J.
K	SEE DO 6171	CP 8-10-06	I.M.
L	SEE DO 6300	CP 12-12-06	I.M.
M	SEE DO 6470	CP 06-28-07	I.M.
N	SEE DO 7593	CP 12-10-20	T.L.

D

C

B

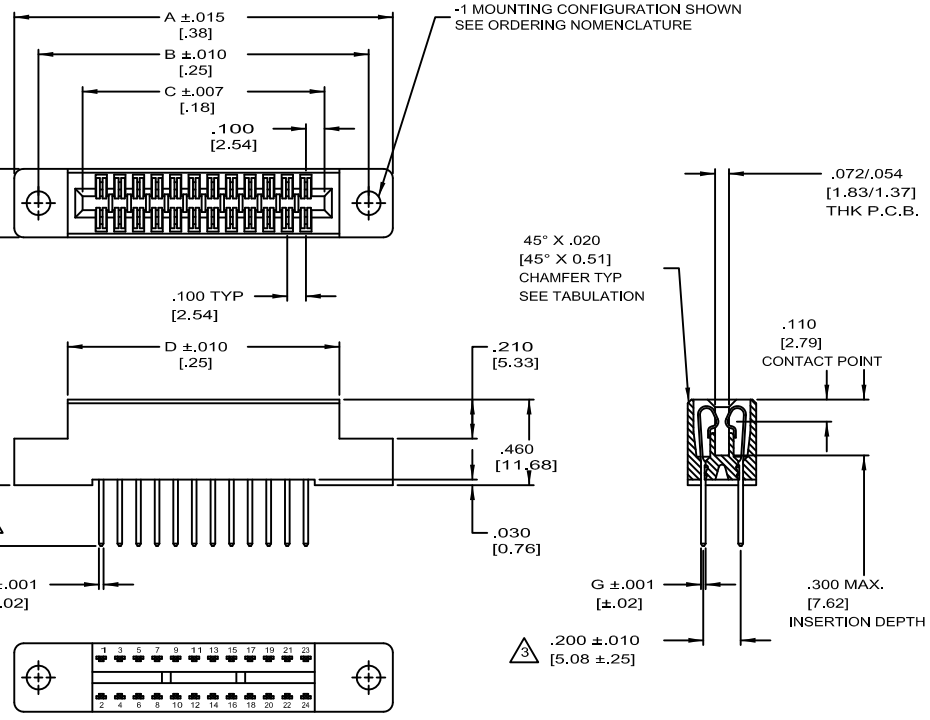
A

D

C

B

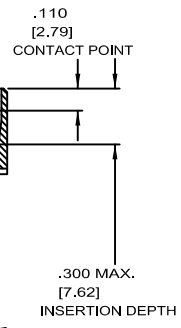
A



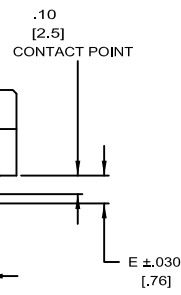
-1 MOUNTING CONFIGURATION SHOWN  
SEE ORDERING NOMENCLATURE

45° X .020  
[45° X 0.51]  
CHAMFER TYP  
SEE TABULATION

.072/.054  
[1.83/1.37]  
THK P.C.B.



.200 ±.010  
[5.08 ±.25]



MATES WITH  
.06 [1.5]  
THK P.C.B.

TAIL TYPE EC

TABULATION:

WITH EXTERNAL CHAMFER

NO. POS	A		B		C		D		
	IN	MM	IN	MM	IN	MM	IN	MM	
20	1.835	46.61	1.575	40.00	1.100	27.94	1.260	32.00	X
24	2.035	51.69	1.775	45.08	1.300	33.02	1.460	37.08	X
26	2.135	54.23	1.875	47.62	1.400	35.56	1.560	39.62	X
30	2.335	59.31	2.075	52.70	1.600	40.64	1.760	44.70	
34	2.535	64.39	2.275	57.78	1.800	45.72	1.960	49.78	X
36	2.635	66.93	2.375	60.32	1.900	48.26	2.060	52.32	X
40	2.835	72.01	2.575	65.40	2.100	53.34	2.260	57.40	
44	3.035	77.09	2.775	70.48	2.300	58.42	2.460	62.48	X
50	3.335	84.71	3.075	78.10	2.600	66.04	2.760	70.10	
60	3.835	97.41	3.575	90.80	3.100	78.74	3.260	82.80	X
72	4.435	112.65	4.175	106.04	3.700	93.98	3.860	98.04	
80	4.835	122.81	4.575	116.20	4.100	104.14	4.260	108.20	X DISCONTINUED 9
86	5.135	130.43	4.875	123.82	4.400	111.76	4.560	115.82	DISCONTINUED 9
100	5.835	148.21	5.575	141.60	5.100	129.54	5.260	133.60	DISCONTINUED 9

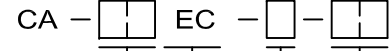
9 POSITIONS 80, 86, 100 ARE DISCONTINUED.  
CONSULT FACTORY FOR PART AVAILABILITY FOR HIGH VOLUME REQUIREMENTS.

8. MEETS THE REQUIREMENTS OF THE EUROPEAN PARLIAMENT AND THE RESTRICTION OF THE USE OF CERTAIN HAZARDOUS SUBSTANCES IN ELECTRICAL AND ELECTRONIC EQUIPMENT. (RoHS)

7. INTERPRET DIMENSIONS AND TOLERANCES PER ASME Y14.5M-1994

5. FOR DETAIL SPECIFICATION SEE DRAWING 100031

5. ORDERING NOMENCLATURE:



NO. OF POSITIONS

EDGE CARD

MOUNTING CONFIGURATION:

- 1 = Ø.128 [3.25] HOLE
- 3 = NO MOUNTING EARS
- 4 = #4-40 THREADED INSERT

TAIL TYPE:

	E DIM.	X F DIM.	X G DIM.
SD = SOLDER DIP	.170 [4.32]	X .025 [0.64]	X .025 [0.64]
EC = EDGE CARD	.150 [3.81]	X .025 [0.64]	X .025 [0.64]
1W = 1 LEVEL WRAP TAIL	.315 [8.00]	X .025 [0.64]	X .025 [0.64]
3W = 3 LEVEL WRAP TAIL	.635 [16.13]	X .025 [0.64]	X .025 [0.64]

3. PLATING:

SOLDER DIP AND EDGE CARD  
CONTACT AREA: .000020 [.00051] GOLD  
TAIL AREA: .000150 [.00381] TIN  
UNDERPLATE: .000075 [.00190] NICKEL  
WRAP TAILS  
CONTACT AREA: .000020 [.00051] GOLD  
TAIL AREA: .000005 [.00013] GOLD FLASH  
UNDERPLATE: .000075 [.00190] NICKEL

2. CONTACT MATERIAL: PHOSPHOR BRONZE

1. INSULATOR MATERIAL: GLASS FILLED POLYESTER, GREEN, UL94V-0.

NOTES: UNLESS OTHERWISE SPECIFIED

DIMENSIONS ARE IN INCHES TOLERANCES ARE: DECIMALS ANGLES .XX ±.010 ±3° .XXX ±.005	APPROVALS DRAWN I. MORRELL CHECKED A. JOCHEN	DATE 11-10-86 11-10-86	<b>CIRCUIT ASSEMBLY CORP.</b> 6 AUTRY SUITE 150, IRVINE, CALIFORNIA 92618 <b>CONNECTOR ASSEMBLY - EC SERIES</b> <b>EDGE CARD, CA-XXEC-X-XX</b> <b>"RoHS"</b>	
	THE INFORMATION AND DESIGN DISCLOSED HEREIN WAS ORIGINATED BY AND IS THE PROPERTY OF CIRCUIT ASSEMBLY CORPORATION. RESERVES ALL PATENT, PROPRIETARY, DESIGN, MANUFACTURING, REPRODUCTION, USE AND SALES RIGHTS HERETO, AND TO ANY ARTICLE DISCLOSED HEREIN EXCEPT TO THE EXTENT RIGHTS ARE EXPRESSLY GRANTED TO OTHERS. THE FOREGOING DOES NOT APPLY TO VENDOR PROPRIETARY RIGHTS.	SIZE <b>C</b>		CODE IDENT NO. 52072
DO NOT SCALE DRAWING	SCALE: 2:1		SHEET 1 OF 1	

4

3

2

1