

# MODULAR, .025" SQUARE SYSTEM, STRIP SOCKET LOW PROFILE

## SPECIFICATIONS

### ENVIRONMENTAL

Temperature Range: -55°C to +105°C

### MECHANICAL

Insulator Material: Glass-filled thermoplastic, black, UL94V-0

Contact Material: Copper Alloy

Contact Plating: Gold Flash

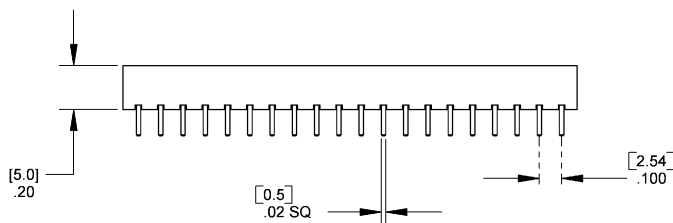
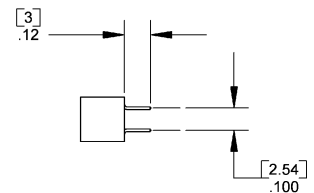
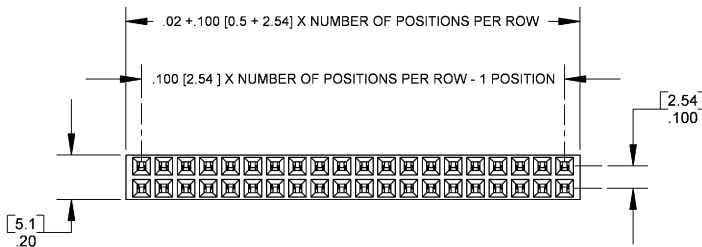
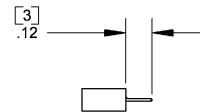
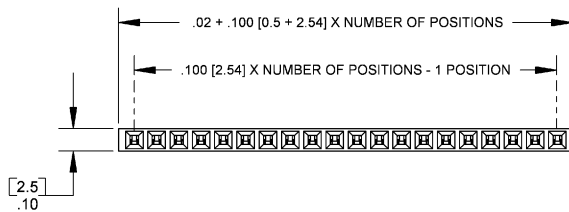
### ELECTRICAL

Current Rating: 1 AMP

Consult factory for additional options

CA- SERIES POSITION VS-12A

SERIES	POSITION
S = Single	Single Row = 01 thru 40
D = Dual	Dual Row = 02 thru 80



Mating Product: .100" strip header (page 111-113)

Drawing Number: CA-610233



5