

3



INSULATION DISPLACEMENT DIP PLUG

SPECIFICATIONS

ENVIRONMENTAL

Temperature Range: -55°C to +105°C

MECHANICAL

Insulator Material: Glass-filled thermoplastic, black, UL94V-0

Contact Material: Copper Alloy

Contact Plating: Tin

Terminates To: .050" cable, 28 AWG

ELECTRICAL

Current Rating: 1 AMP

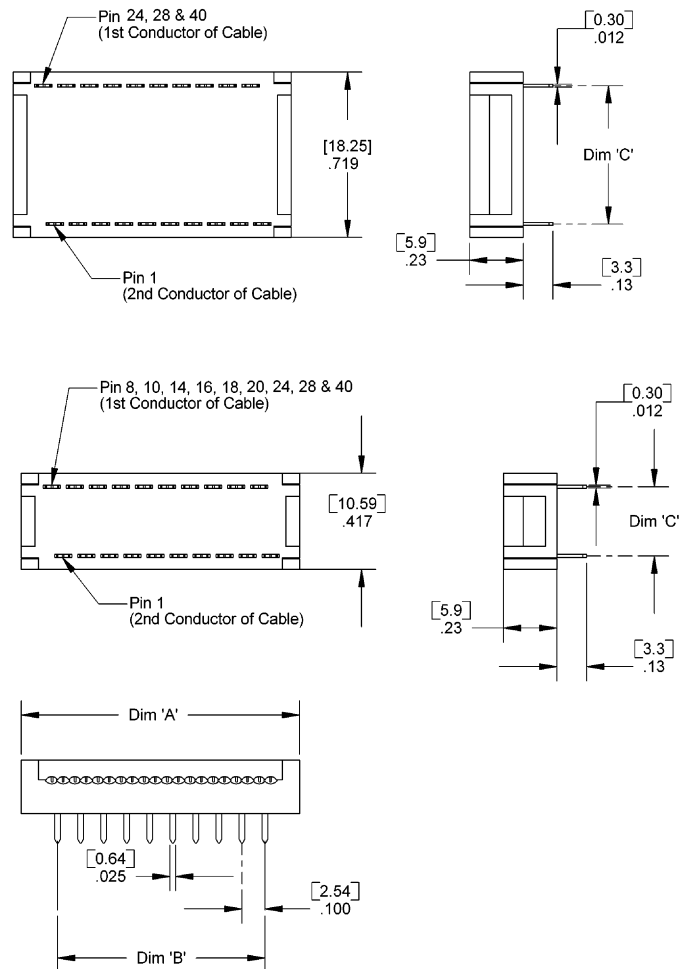
Consult factory for additional options

CA- POSITION IDPB-1T

POSITION	
08	20
10	24*
14	28*
16	40*
18	

DIMENSIONS			
Position	A	B	C
08	.608 [15.44]	.300 [7.62]	.300 [7.62]
10	.708 [17.98]	.400 [10.16]	.300 [7.62]
14	.908 [23.06]	.600 [15.24]	.300 [7.62]
16	1.008 [25.60]	.700 [17.78]	.300 [7.62]
18	1.108 [28.14]	.800 [20.32]	.300 [7.62]
20	1.208 [30.68]	.900 [22.86]	.300 [7.62]
24	1.408 [35.76]	1.100 [27.94]	.600 [15.24]
24-3*	1.408 [35.76]	1.100 [27.94]	.300 [7.62]
28	1.608 [40.84]	1.300 [33.02]	.600 [15.24]
28-3*	1.608 [40.84]	1.300 [33.02]	.300 [7.62]
40	2.208 [56.08]	1.900 [48.26]	.600 [15.24]
40-3*	2.208 [56.08]	1.900 [48.26]	.300 [7.62]

*24, 28, & 40 position also available with .300 "C" dimension. Add -3 to end of part number



Mating Product: PCB mount
Drawing Number: CA-620400

