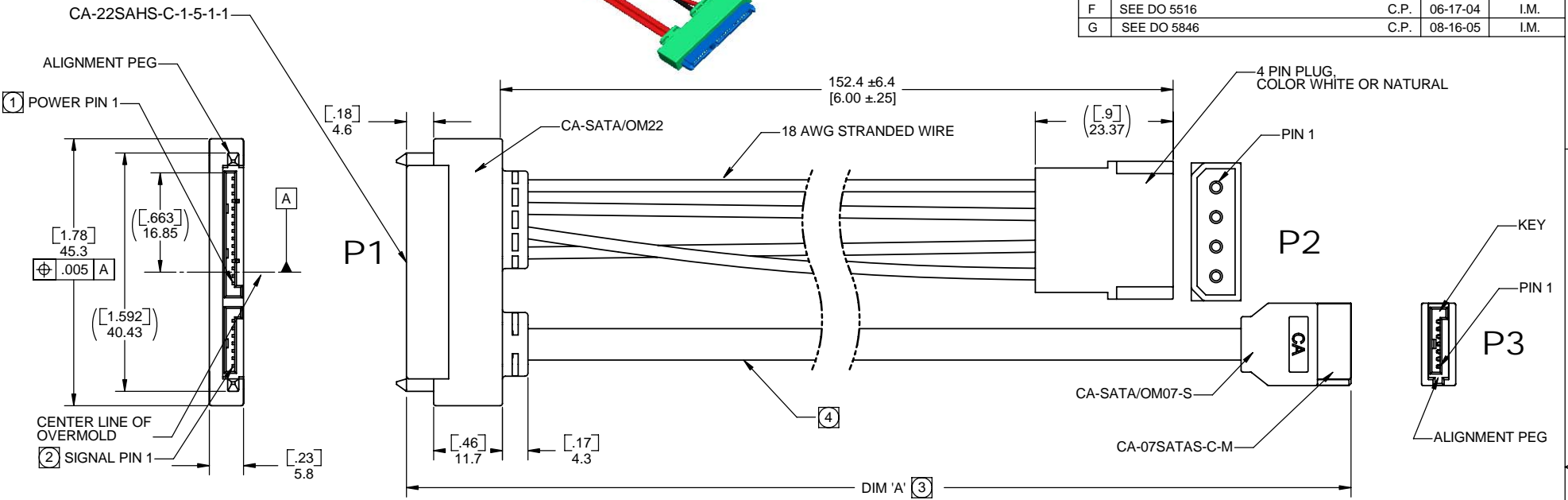
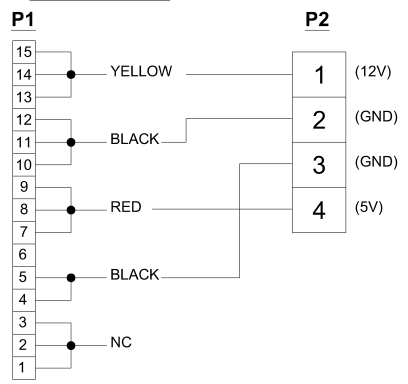


PART NO. U709019-X.XM

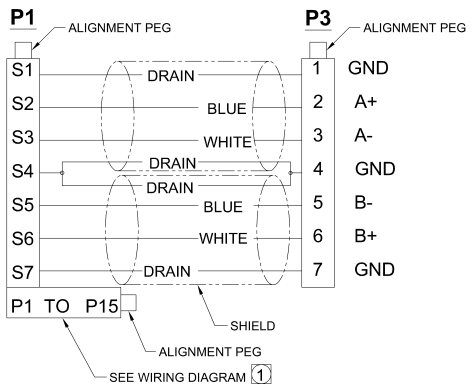
REVISIONS				
LTR	DESCRIPTION	DATE	APPROVED	
A	INITIAL RELEASE, SEE DO 5299	C.P. 10-14-03	A.J.	
B	SEE DO 5307	C.P. 10-27-03	A.J.	
C	SEE DO 5366	C.P. 01-06-04	A.J.	
D	SEE DO 5378	C.P. 01-27-04	A.J.	
E	SEE DO 5467	C.P. 05-03-04	A.J.	
F	SEE DO 5516	C.P. 06-17-04	I.M.	
G	SEE DO 5846	C.P. 08-16-05	I.M.	



① WIRING DIAGRAM :



② WIRING DIAGRAM :



④ USE SERIAL ATA COMPLIANT CABLE, 26 AWG APPROVED SOURCES :
HITACHI CABLE MANCHESTER
SPACE SHUTTLE
DerAn
OR CA APPROVED EQUIVALENT

- ③ DIMENSION 'A' IS IN METERS.
- ② REFER TO SIGNAL WIRING DIAGRAM.
- ① REFER TO POWER WIRING DIAGRAM.

NOTES : UNLESS OTHERWISE SPECIFIED

ORDERING NOMENCLATURE
U709019 -X.XM

SERIAL ATA
CABLE ASSEMBLY

LENGTH

③ DIM 'A' IN METERS
TOLERANCES : <.15 M[6"] ± .013 M[.5"]
>.15 M[6"] TO .61 M[24"] ± .025 M[1"]

DIMENSIONS ARE IN MILLIMETERS TOLERANCES ARE: DECIMALS ANGLES X ± .25 XX ± .13	APPROVALS	DATE	CIRCUIT ASSEMBLY CORP. 18 THOMAS ST., IRVINE, CALIFORNIA 92618-2777
	DRAWN CUONG P.	10-14-03	
DIMENSIONS IN BRACKETS [X.XX] ARE IN INCHES TOLERANCES ARE: DECIMALS ANGLES XX ± .010 XXX ± .005	CHECKED A. JOCHEN	10-14-03	CABLE ASSEMBLY CA-07SATA/22SAHS/04 PIN-X.XM
	THE INFORMATION AND DESIGN DISCLOSED HEREIN WAS ORIGINATED BY AND IS THE PROPERTY OF CIRCUIT ASSEMBLY CORPORATION. CIRCUIT ASSEMBLY CORPORATION RESERVES ALL PATENT, PROPRIETARY, DESIGN, MANUFACTURING, REPRODUCTION, USE AND SALES RIGHTS THEREBY, AND TO ANY ARTICLE DISCLOSED HEREIN EXCEPT TO THE EXTENT RIGHTS ARE EXPRESSLY GRANTED TO OTHERS. THE FOREGOING DOES NOT APPLY TO VENDOR PROPRIETARY RIGHTS.		
DO NOT SCALE DRAWING	SIZE C	CODE IDENT NO. 52072	DRAWING NO. U709019
	SCALE: 2:1		REV. G
			SHEET 1 OF 1